



**dmetec**

Medical Innovation since 1983

# Surgystar Plus

## Piezo Bone Surgery

Much more user friendly with LED-Hanpiece.

Much Stronger with bigger oscillator.

### + Specification

- + **Working frequency**  
20 kHz - 30 kHz
- + **Cleaning function**  
One touch cleaning system
- + **Automatic Protection**  
Interrupts power and water supply  
in case of incorrect use of the handpiece  
and insert tip.

### + Advantage

- + Color TFT LCD 4.8"
- + Touch Screen
- + Better visibility with LED handpiece
- + Easy to set by foot switch
- + Easy to change tubing
- + All tubings are autoclavable
- + **Micrometric cuts**  
maximum surgical precision  
and intra-operative sensitivity
- + **Selective cuts**  
maximum safety for the soft tissues
- + **Cavitation effect**  
maximum intra-operative visibility  
(blood free surgical site)



## + Surgystar Plus - Unit Consisting

### Main Unit



### LED Handpiece with Cable

Autoclavable



### Foot Switch

+ Foot-Free and Output adjustment function



### Autoclavable Tray

Autoclavable with handpiece&cable, tip, water connecting tube, handpiece holder



### Transformer

+ Medical Power Supply

## Technical specifications

93/42/EEC	IIb
Conditions for use	+10 °C ~ +40 °C 30 % ~ 75 % relative humidity 500 hPa ~ 1060 hPa
Storage and transport conditions	-10 °C ~ +35 °C 10 % ~ 95 % relative humidity 800 hPa ~ 1060 hPa
Specifications of unit	
Model:	Surgystar Plus
Supply voltage:	24 V , 3.75 A
Ultrasonic output characteristics:	Frequency: 20-30 kHz
AC/DC Adaptor	Input: 100-240 V , 50/60 Hz Output: 24 V , 3.75 A
Dimensions / Weight	
Unit Dimensions:	189mm(W) x 265mm(D) x 175mm(H)
Unit Weight:	1.8Kg

# Surgystar

## Piezo Bone Surgery

A new definition of Piezo Surgery

### + Specification

- + **Working frequency**  
24 kHz - 32 kHz
- + **Cleaning function**  
One touch cleaning system
- + **Automatic Protection**  
Interrupts power and water supply  
in case of incorrect use of the handpiece  
and insert tip.

### + Advantage

- + Wide LCD of 5.7"
- + Touch Screen
- + Easy to set by foot switch
- + Easy to change tubing
- + All tubings are autoclavable
- + **Micrometric cuts**  
maximum surgical precision  
and intra-operative sensitivity
- + **Selective cuts**  
maximum safety for the soft tissues
- + **Cavitation effect**  
maximum intra-operative visibility  
(blood free surgical site)



## + Surgystar - Unit Consisting

### Main Unit

#### Dimension :

315(W) X 235(D) X 115mm(H)



### Handpiece with Cable

#### Autoclavable



### Foot Switch

+ Foot-Free and Output adjustment function



### Autoclavable Tray

Autoclavable with handpiece&cable,  
tip, water connecting tube,  
handpiece holder



### Transformer

+ Medical Power Supply

## Technical specifications

93/42/EEC	IIb
Conditions for use	+10 °C ~ +40 °C 30 % ~ 75 % relative humidity 700 hPa ~ 1060 hPa
Storage and transport conditions	-10 °C ~ +40 °C 10 % ~ 95 % relative humidity 500 hPa ~ 1060 hPa
Specifications of unit	
Model:	SurgyStar
Supply voltage:	100-240V~, 50-60 Hz, 1.5 A
Ultrasonic output characteristics:	Frequency: 24-32 kHz
AC/DC Adaptor	Input: 100-240 V , 50/60 Hz Output: 24 V , 2.7 A
Dimensions / Weight	
Unit Dimensions:	315mm(W) x 235mm(D) x 115mm(H)
Unit Weight:	2.14Kg

# Compact S

## Built in Scaler

### + Specification

- + **Working frequency**  
24-32 kHz
- + **Power supply**  
AC 24 V, 50/60 Hz or DC 24 V
- + **Water supply pressure**  
1-5bar

### + Special Features

- + Feedback system for built-in circuit module keeps constantly strong power
- + Quality is verified with customers over 10 years

### + Compact S - Unit Consisting



Handpiece



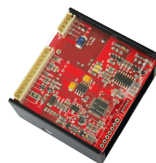
Tip with holder



Torque Wrench



Autoclave box



Module



Harness cable



Cable

# LED Compact S

## Built in Scaler

### + Specification

- + **Working frequency**  
24-32 kHz
- + **Power supply**  
AC 24 V, 50/60 Hz or DC 24 V
- + **Water supply pressure**  
1-5bar

### + Special Features

- + Easy to secure clear visibility of operation spot with LED light
- + Feedback system of built-In circuit module keeps constantly strong power

### + LED Compact S - Unit Consisting



LED Handpiece



Tip with holder



Torque Wrench



Autoclave box



Module



Harness cable



Cable

# Cleanse S+

## Ultrasonic Piezo Scaler

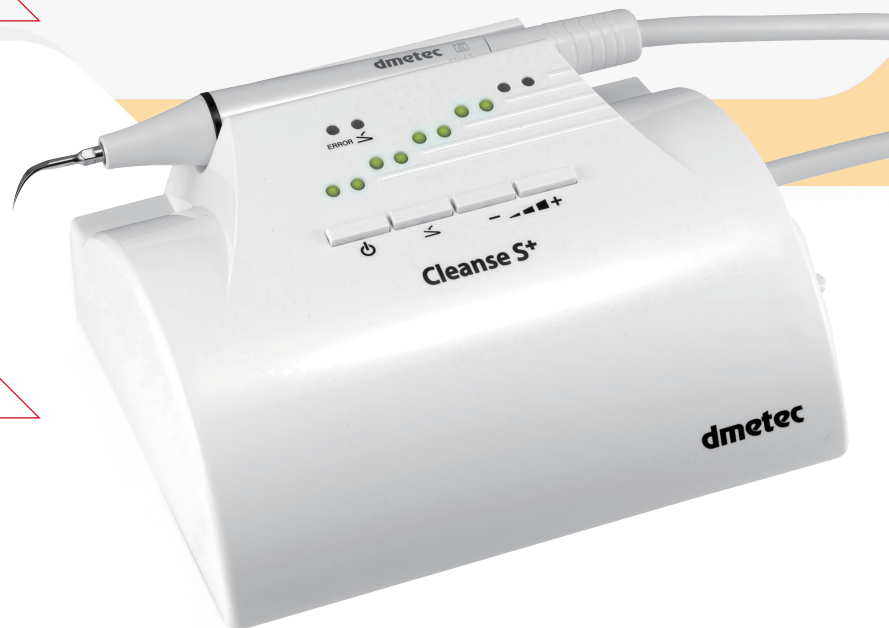
Feedback system for built in circuit module keeps constantly strong power.  
Effective removal for tartar, bridges, crowns and root pins, etc.

### + Specification

- + **Working frequency**  
24-32 kHz
- + **Power supply**  
DC 24 V, 1.7 A
- + **Water supply pressure**  
1-5bar

### + Special Features

- + All function is operated by new digital system
- + One-touch foot switch
- + Very small size, light weight
- + **20 steps of power control system**  
High-power output 1-10Max scaling for general treatments  
Low-power output 1-10Max for perio & endodontic treatments







Number	Name
1	Unit Cleanse S+
2	Sterilization box
3	Torque wrench
4	Tip(Applied part) & Tip holder
5	Handpiece
6	Transformer 100-240 V , 50/60 Hz
7	Foot switch with cable
8	Water supply hose with coupler

## Technical specifications

93/42/EEC	IIa
Conditions for use	+10 °C ~ +35 °C 30 % ~ 75 % relative humidity 800 hPa ~ 1060 hPa
Storage and transport conditions	-10 °C ~ +40 °C 10 % ~ 95 % relative humidity 500 hPa ~ 1060 hPa
Specifications of unit	
Frequency range available:	24-32kHz.
Water supply pressure:	1 to 5 bar (15 to 72 psi)
Supply Power:	24V, 1.7A
Transformer:	Input: 100-240 V , 50/60 Hz Output: 24 V / 1.7 A
Power consumption:	50 VA
Fuse:	T1.6 A, Time-lag, 250 V, ø5x20mm(in unit)
Irrigation flow rate:	Min : below 20ml/min, Max : more than 100ml/min

## Weight and dimensions

Main unit:	Weight:	490g
	Dimensions:	65mm(H) x 150mm(W) x 120mm(D)

# Clevo

## UV Disinfector

CLEVO is an ultraviolet ray disinfector for dental instruments and any kinds of small instruments frequently used to patients

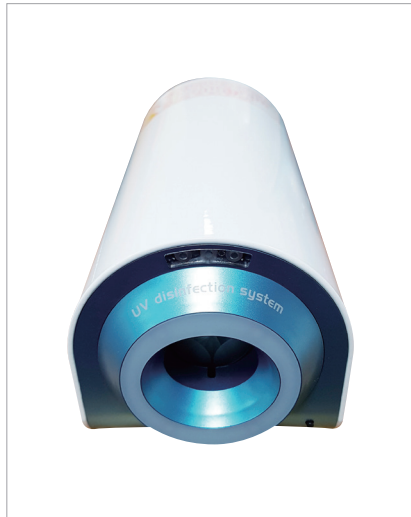
### + Specification

- + **Input voltage**  
AC 100 - 240 V, 50/60 Hz
- + **Power consumption**  
70 VA
- + **Lamp output**  
5.7 W
- + **Dimension**  
105mm X 105mm X 200mm

### + Advantage

- + Automatic short operation for only 15sec.
- + Strong UV-C power of 695,487  $\mu\text{W}\cdot\text{sec}/\text{cm}^2$
- + Small portable and light weight
- + Aroma perfume diffusing (Optional)

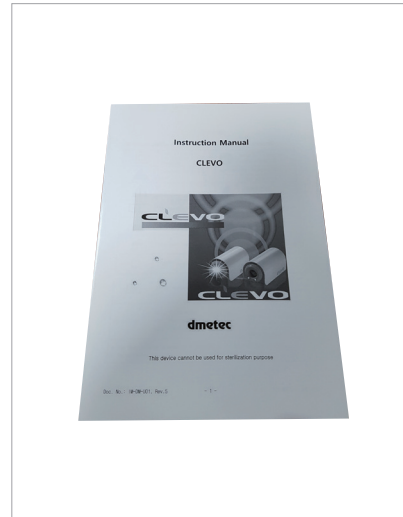




Main unit



Power cable



User Manual

Number	Name	Q.ty
1	Main unit	1
2	Power cable	1
3	User Manual	1

## Technical specifications

93/42/EEC	IIa
Degree of safety of application in presence of a flammable anesthetic mixture	Unit unsuitable for use in presence of a flammable anesthetic mixture with air or with oxygen or nitrous oxide.
Conditions for use	+10 °C ~ +35 °C 30 % ~ 75 % 800 hPa ~ 1060 hPa
Storage and transport conditions	-10 °C ~ +40 °C 10 % ~ 95 % 500 hPa ~ 1060 hPa
Specifications of unit	
Model / Product	CLEVO Ultraviolet disinfectant
Supply power	100 – 240 V~, 50/60Hz
Fuse	250V / T2A
Power consumption	70VA
Output UV	1.9W * 3EA
Weight	1.1kg
Dimensions	105mm X 220mm X 105mm

# Skylight

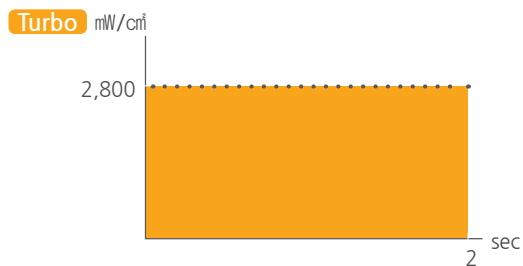
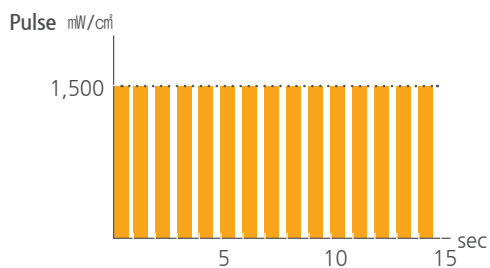
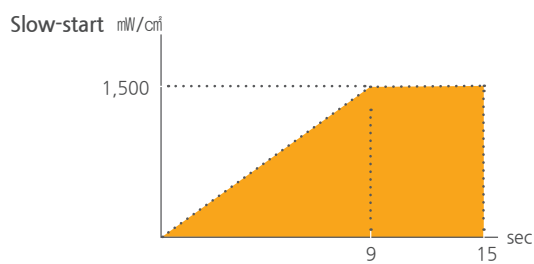
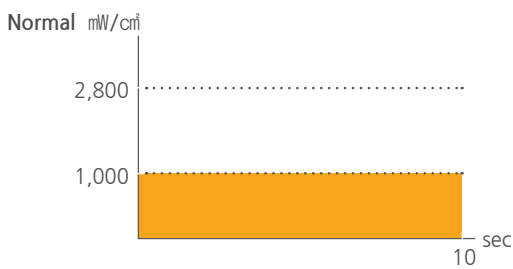
## LED Curing Light

### + Specification

- + Output intensity  
1,100~2,800mW/cm<sup>2</sup>
- + Wavelength  
440-490nm

### + Special Features

- + Cordless, rechargeable gun type curing light
- + 4 Curing Modes-Turbo, Slow-start, Pulse and Normal mode
- + Available for 2 seconds curing with Turbo mode
- + 11mm wide guide tip for wide area curing
- + Only 2 hours charge for 360 times curing
- + Li-ion battery with long lifetime and no memory effect
- + Power indicator set in charger



# Ecolight

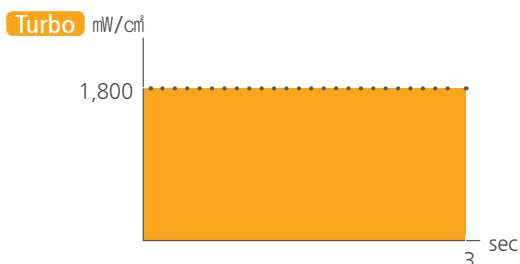
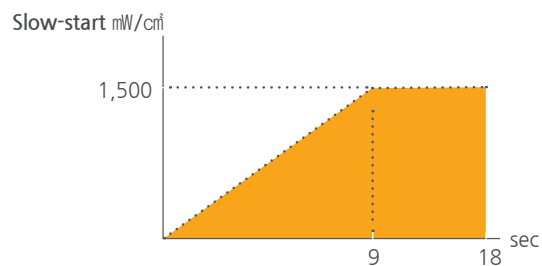
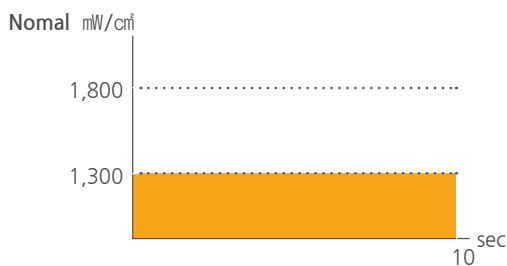
## LED Curing Light

### + Specification

- |   |                            |
|---|----------------------------|
| + Output intensity<br>1,300 ~ 1,800mW/cm <sup>2</sup> | + Battery<br>Li-ion, 3.7 V |
| + Wavelength<br>420 ~ 490nm                           | + Weight<br>105g           |

### + Special Features






- + Rechargeable Pen-type curing light
- + Easy to use
- + 3 Curing modes
- + Turbo(1,800mW/cm<sup>2</sup> for 3secs)
- + Slow start(1,500W/cm<sup>2</sup> for 15secs)
- + Normal(1,300cmW/cm<sup>2</sup> for 10secs)
- + Lens for wide area(no light-guide tip)
- + Li-ion battery with long life and memory effect

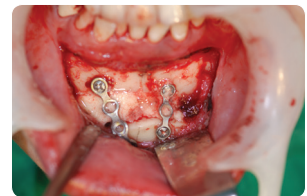
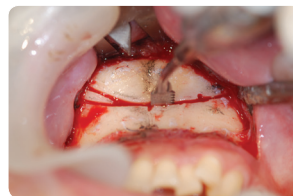
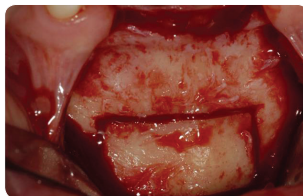
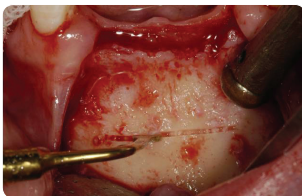


# Ultrasonic Surgical Tips

- Micro-precise surgical tips
- Applied to all osteotomy techniques in Maxilla & Mandible

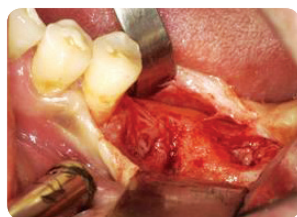
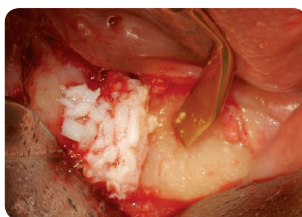
## + OSTEOTOMY SURGICAL TIPS

 <p><b>BS01</b></p>	<p><b>BS01</b> Osteotomy saw Operative Length: 12.5mm Saw width: 4.5mm Saw thickness: 0.42mm</p>	 <p><b>BS1S</b></p>	<p><b>BS1S</b> Osteotomy saw Operative Length: 12.5mm Saw width: 4.5mm Saw thickness: 0.42mm</p>	 <p><b>EX01</b></p>	<p><b>EX01</b> Osteotomy flat blade Operative Length: 14mm Saw width: 4.5mm Saw thickness: 0.2mm</p>
 <p><b>BS2L</b></p>	<p><b>BS2L</b> Osteotomy saw (left bended) Operative Length: 14mm Saw width: 4.5mm Saw thickness: 0.42mm</p>	 <p><b>BS2R</b></p>	<p><b>BS2R</b> Osteotomy saw (right bended) Operative Length: 14mm Saw width: 4.5mm Saw thickness: 0.42mm</p>	 <p><b>RS01 (Surgystar Plus)</b></p>	<p><b>RS01 (Surgystar Plus)</b> Round Osteotomy saw Operative Length: 21.1mm Saw width: 4.35mm Saw thickness: 0.42mm</p>



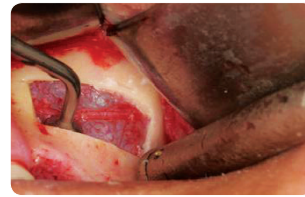
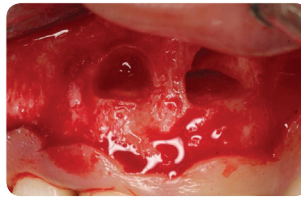
## + OSTEOPLASTY SURGICAL TIPS

 <p><b>HB01</b></p>	<p><b>HB01</b> Osteoplasty triangle Operative Length: 12.5mm Saw width: 4.0mm Saw thickness: 0.85mm</p>	 <p><b>HB02</b></p>	<p><b>HB02</b> Osteoplasty round Operative Length: 12.5mm Saw width: 4.0mm Saw thickness: 0.85mm</p>	 <p><b>P01 (Surgystar Plus)</b></p>	<p><b>P01 (Surgystar Plus)</b> Osteoplasty polishing Operative Length: 10.5mm Saw width: 5.0mm Saw thickness: 1.0mm</p>
--	---	--	--	--	---

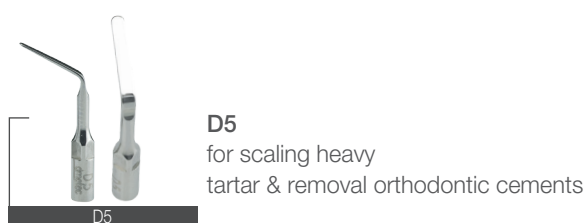




## + FINISHING & DRILLING SURGICAL TIPS



## + Scaler Tips - Application





## Wireless Digital Occlusal Analysis system

Diagnose in Digital Accuracy

### + Specification

#### + Wireless Connectivity & Charge

Wireless handpiece with Rechargeable battery inside

#### Quantitative data measurement

Provide occlusal force in numerical data (kgf)

#### Occlusal analyze sensor

Disposable measuring Sensor & Guide

#### Program Mobility

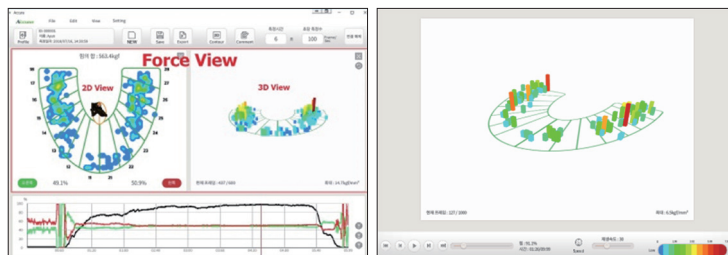
Program in USB allows to move patients data and run ACCURA from computer to computer



### + Advantage

#### + Provide Intuitive user program

- 2D, 3D and Time graphs for occlusal force
- Real-time occlusal measurement



#### + Easy patient data management

- Quick data comparison
- Save captures & videos of data

#### + Acquire recognizable occlusal data after dental treatment

- Diagnose occlusal balance after Implant, crown, bridge, extraction and etc.





**Wireless handpiece**

Dimension: 81(W) X 167(L) X 15mm(H)



**Handpiece charger (Holder)**



**Sensor film & film guide**

Size : Small / Medium

**USB Memory  
User program**



**Others**

- USB Cable & adaptor
- Calibration tool
- Wireless Charging Pad

**Technical specifications**

Conditions for use	+10°C ~ +40°C 30% ~ 75% relative humidity 800hPa ~ 1060hPa
Storage and transport conditions	-10°C ~ +40°C 10% ~ 95% relative humidity 500hPa ~ 1060hPa
Specifications of unit	
Model :	ACCURA / Occlusal Analyzer
Rechargeable Battery :	3.7V / 1100mAh
Charging Voltage :	Wireless charging 5V, 500mA Charging with cable 5V, 100mA
Dimension / Weight	
Unit Dimensions :	167(L)mm X 81mm (W)X 15mm(H)
Unit Weight :	125g

**Accura system requirements (Minimum)**

Display	1280x1024
OS	Windows® 7, 8, 10 Microsoft.net Framework4.5
CPU	Intel Core4 Processor
RAM	4GB
HDD	20GB
USB Port	USB 2.0



E-Book QR

**dmetec**

Tel +82-32-234-0011 Fax +82-32-234-1444 E-mail [dmetec@dmetec.com](mailto:dmetec@dmetec.com)

402-601,602,603 Bucheon Techno-park, 655 Pyeongcheon-ro, Bucheon-si, Gyeonggi-do, Korea