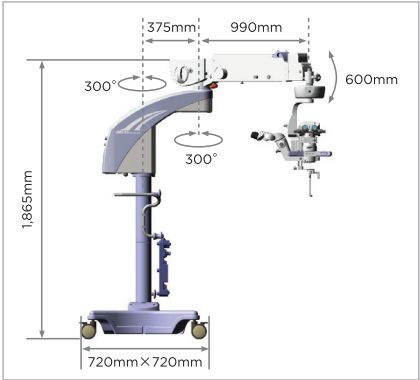


Specifications

	OMS-800 OFFISS	OMS-800 Pro	OMS-800 Standard
	Floor Type		
Microscope type	Galileo type		
Magnification change type	Electric zoom continuous change		
Eyepiece (Eyepiece magnification)	12.5x		
Objective Lens	f=200mm		
Display magnification (X)	4.2/5/6/7/8/9/10/11/13/15/17/19/21		
Total magnification	4.2x~21x		
1st arm length (Distance between shafts)	375mm		
1st arm rotation range	300°		
2nd arm length (Distance between shafts)	990mm		875mm
2nd arm rotation range	300°		
2nd arm vertical movement range	600mm		
2nd arm mounting weight	6kg-18kg		9kg-21kg
Power Supply	AC 100-240V, 50-60Hz 280VA		
Dimensions	Base (Base unit)	720mm(W) × 720mm(D)	
	Base (Base total height)	1,865mm	
Weight	250kg	247kg	244kg
Permitted weight for accessories	4.8(4.4)* kg	6.8(6.4)* kg	7.3(6.9)* kg

* () CBS type

OMS-800 Dimensions



Photos Courtesy of: Professor Masayuki Horiguchi, MD Ophthalmology Department Fujita Health University
Associated Professor Kiyoshi Suzuma, MD Department of Ophthalmology and Visual Science, Graduate School Biomedical Science, Nagasaki University



* Not available for sale in the United States.
* Not available in all countries, please check with your distributor for availability in your country
* Subject to change in design and/or specifications without advanced notice.

IMPORTANT In order to obtain the best results with this instrument, please be sure to review all user instructions prior to operation.



TOPCON CORPORATION
75-1 Hasunuma-cho, Itabashi-ku, Tokyo 174-8580, Japan, Phone:+81-(0)3-3558-2522/2502 Fax:+81-(0)3-3965-6898 www.topcon.co.jp

TOPCON MEDICAL SYSTEMS, INC.
111 Bauer Drive, Oakland, NJ 07436, U.S.A.
Phone:+1-201-599-5100 Fax:+1-201-599-5250 www.topconmedical.com

TOPCON HEALTHCARE SOLUTIONS, INC.
111 Bauer Drive, Oakland, NJ 07436, U.S.A.
Phone: 1-201-599-5100 Fax: 1-201-599-5250 www.topconhealth.com

TOPCON CANADA INC.
110 Provencher Avenue, Boisbriand, QC J7G 1N1 CANADA
Phone:+1-450-430-7771 Fax:+1-450-430-6457 www.topcon.ca

TOPCON EUROPE MEDICAL B.V.
Essebaan 11, 2908 LJ Capelle a/d IJssel, P.O.Box145;
2900 AC, Capelle a/d IJssel, THE NETHERLANDS
Phone:+31-(0)10-4585077 Fax:+31-(0)10-4585045
E-mail: medical@topcon.eu www.topcon-medical.eu

ITALY OFFICE
Viale dell'Industria 60, 20037 Paderno Dugnano, (Milano), ITALY
Phone:+39-02-9186671 Fax:+39-02-91081091 E-mail: info@topcon.it www.topcon.it

DANMARK OFFICE
Præstemarksvej 25, 4000 Roskilde, DANMARK
Phone:+45-46-327500 Fax:+45-46-327555
E-mail: topcon@topcondanmark.dk www.topcondanmark.dk

IRELAND OFFICE
Unit 276, Blanchardstown, Corporate Park 2 Ballycoolin Dublin 15, IRELAND
Phone:+353-18975900 Fax:+353-18293915 E-mail: medical@topcon.ie www.topcon.ie

TOPCON FRANCE MEDICAL S.A.S.
BAT A1 3 route de la Revolle, 93206 Saint Denis Cedex, France
Phone:+33-1-49212323 Fax:+33-1-4920494 E-mail:topcon@topcon.fr www.topcon.fr

TOPCON DEUTSCHLAND MEDICAL G.m.b.H.
Hanns-Martin-Schleyer Strasse 41, D-47877 Willich, GERMANY
Phone:+49-(0)2154-8850 Fax:+49-(0)2154-885177 E-mail:med@topcon.de www.topcon.de

TOPCON SCANDINAVIA A.B.
Neogatan 2, P.O.Box 25, 43151 Mölndal, SWEDEN
Phone:+46-(0)31-7109200 Fax:+46-(0)31-7109249 E-mail:medical@topcon.se www.topcon.se

TOPCON ESPAÑA S.A.
HEAD OFFICE
Frederic Mompou 4 Esc., A Bajos 3, 08960 Sant Just Desvern Barcelona, SPAIN
Phone:+34-93-4734057 Fax:+34-93-4733932 E-mail: medical@topcon.es www.topcon.es

TOPCON (GREAT BRITAIN) MEDICAL LTD.
Topcon House, Kennel Side, Bone Lane, Newbury, RG14 5PX, U.K.
Phone:+44-1635-551120 Fax:+44-1635-551170 E-mail:medical@topcon.co.uk www.topcon.co.uk

TOPCON POLSKA Sp. z o.o.
ul. Warszawska 23, 42-470 Siewierz, POLAND
Phone:+48-(0)32-6705045 Fax:+48-(0)32-6713405 www.topcon-polska.pl

Mehra Eyetech Private Limited
801 B Wing, Lotus Corporate Park, Graham Firth Steel Compound Goregaon (East)
Mumbai 400063 Maharashtra, INDIA
Phone:+91-22-61285455 www.mehraeyetech.in

TOPCON SINGAPORE MEDICAL PTE. LTD.
1 JALAN KILANG TIMOR #09-01 PACIFIC TECH CENTRE SINGAPORE 159303
Phone:+65-68720606 Fax:+65-67736150
E-mail:medical_sales@topcon.com.sg www.topcon.com.sg

REPRESENTATIVE OFFICE IN INDONESIA
Level 38, Tower A, Kota Kasablanka unit GH-04, Jl. Casablanca, Kav 88, Jakarta, Indonesia 12870
Phone:+62-21-2953-8804

TOPCON INSTRUMENTS (MALAYSIA) SDN.BHD.
No. D1, (Ground Floor), Jalan Excolla 2, Off. Jalan Ampang Putra,
Taman Ampang Hilir, 55100 Kuala Lumpur, MALAYSIA
Phone:+60-(0)3-42709866 Fax:+60-(0)3-42709766

TOPCON INSTRUMENTS (THAILAND) CO.,LTD.
77/62 Sinnsathorn Tower, 37th Floor, Krungthornburi Rd., Klongtongsal,
Klongsarn, Bangkok 10600, THAILAND
Phone:+66-(0)2-440-1152-7 Fax:+66-(0)2-440-1158

TOPCON (BEIJING) MEDICAL TECHNOLOGY CO., LTD.
Room 2808, Tower C, JinChangAn Building No.82 Middle Section of East 4th Ring Road,
Chaoyang District, Beijing 100124, P.R.China
Phone:+86-10-87945176

OMS-800 Series

Operation Microscope
OFFISS / Pro / Standard



YOUR VISION. OUR FOCUS.

OMS-800 series

Operation Microscope

Perfection for Professionals



Bright Wide Field

Topcon's pursuit for perfection is reflected in its continuing development of the OMS-800 range of operating microscopes, adapting them to meet the needs of modern ophthalmic procedures while maintaining the high quality and durability that made Topcon the World Leader in Ophthalmic Equipment.

OFFISS Lenses (OFFISS: Optical Fiber Free Intravitreal Surgery System)

TOPCON has developed a state-of-art observation system for vitrectomy procedures that does not require the use of fiberoptic illumination. The TOPCON OFFISS lenses avoids complicated focusing by allowing the microscope head and indirect lens to move independently of each other, facilitating a clearly focused image at all times. The image inverter activates automatically whenever the OFFISS is in use. The indirect lens can quickly and simply be exchanged for another, saving time and increasing efficiency.



Small 40D Lens
(Outer Diameter ϕ 23)



40D Lens
(Outer Diameter ϕ 28)



80D Lens
(Outer Diameter ϕ 19.4)



120D Lens
(Outer Diameter ϕ 23.5)



Small 120D Lens
(Outer Diameter ϕ 18)

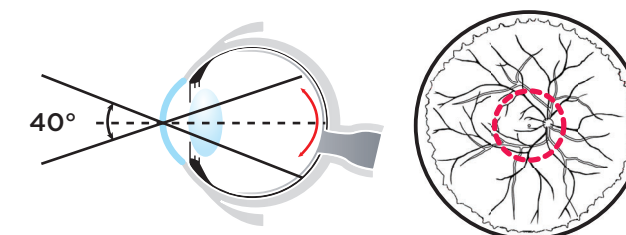


Anterior Lens
(Outer Diameter ϕ 34)

TOPCON OFFISS LENSES

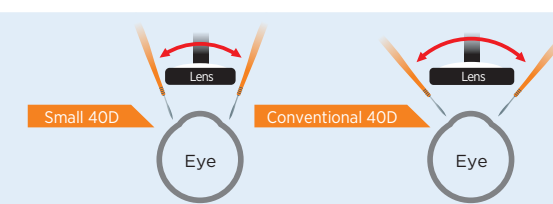
» Small 40D Lens

The new, small 40D lens can assist with membrane peeling in the macular region and is beneficial for highly myopic eyes by avoiding contact between the surgical tools and lens. It provides a crisp, wide angle view with remarkable stereopsis, giving a clear view of the posterior pole, an area that is inaccessible with contact lens observation.



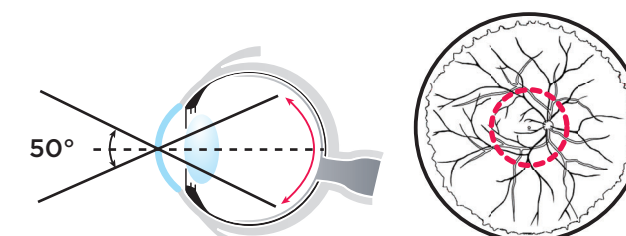
The Small 40D allows better vertical access for surgical tools than the conventional 40D lens.

Minimizes contact between surgical tools and lens. Improved comfort.



» 40D Lens

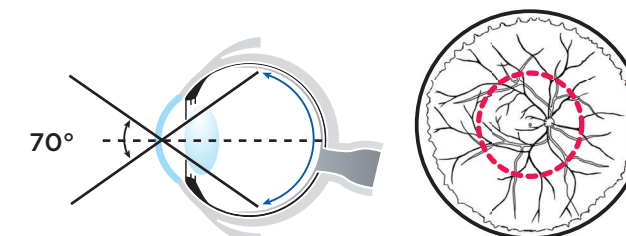
A bright, stereoscopic view is a particular feature of the 40D lens, making it ideal for posterior segment procedures. Combined with the microscope illumination, the characteristics of the lens make the use of additional fiber optic illumination unnecessary, enabling bimanual procedures and hence saving time.



Vascular Arcade

» 80D Lens

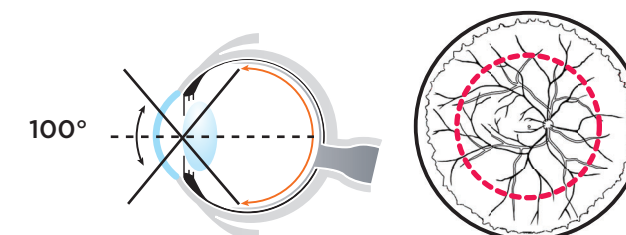
The 80D lens allows observation from the posterior segment out to the intermediate peripheral zone of the retina. It can be used in combination with fiber optic illumination.



Intermediate peripheral zone

» Small 120D Lens

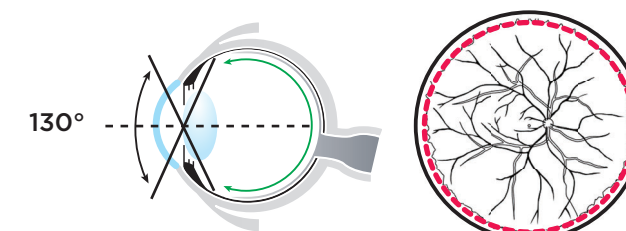
This compact lens takes up minimal space in the operating field and does not interfere with the use of surgical instruments. The wide angle view of 100 degrees can expand up to approximately 130 degrees with the use of air substitution.



Equator

» 120D Lens

Useful for vitreous surgery and photocoagulation of the central and peripheral areas up to the Ora Serrata, the 120D lens provides a field of view of 130 degrees with good stereopsis. This lens can be used under air substitution in combination with a wide angle fiber optic endoilluminator.



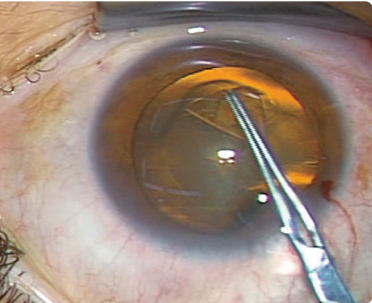
Ora Serrata

FOR CATARACT AND VITREOUS SURGERY

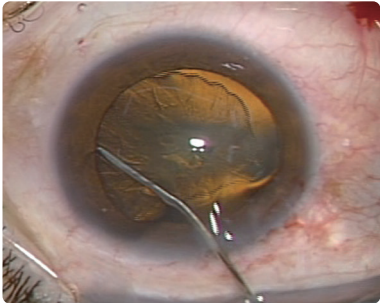
SUPERIOR FUNCTIONALITY

Superb image quality for cataract and vitreous surgery

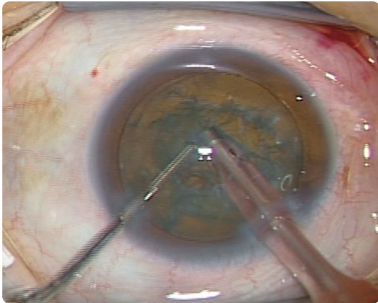
With the advancement of cataract surgery and phacoemulsification techniques, an increasing number of surgeons are performing simultaneous cataract and vitreous surgeries. By using a three mode illumination system, the OMS-800 provides an improved red reflex with better shadow and contrast, even under conditions of low illumination.



CCC



Hydrodissection



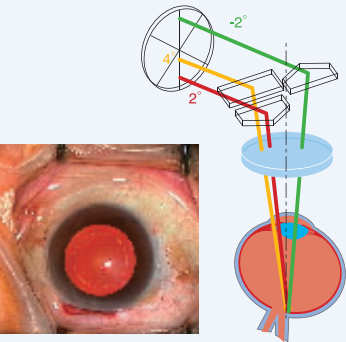
PEA

THREE ILLUMINATION MODES

Easy switch between illumination modes

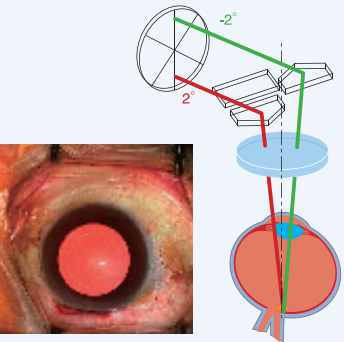
Three different illumination modes are available to meet all surgical lighting needs. Different modes are easily selected using the footswitch.

Fully Illuminated (+4°, +2°, -2°)



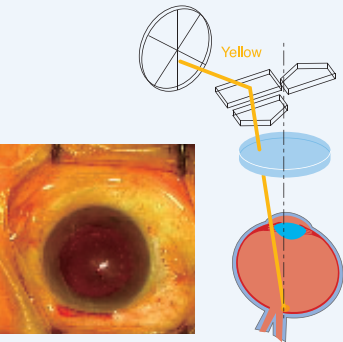
In this mode, the illumination, brightness, stereoscopic view and shadow contrast are perfectly balanced for superior observation clarity. The illumination is always optimum regardless of the position of the patient's eye.

Plus and Minus (-2°, +2°)

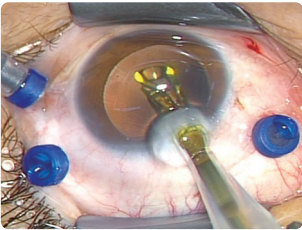


This illumination mode generates a particularly good red-reflex, and is very useful during anterior capsulotomies.

Yellow Filter (+4°)



The combination of illumination and yellow filter is particularly advantageous during long procedures to prevent phototoxicity.



Low intensity illumination enables clear observation while preventing light damage

Superbly designed optics provide optimum illumination, eliminating harmful wavelengths and unnecessary brightness. Low light intensity also helps to prevent light-related damage of the retinal tissues. The integral IR filter further reduces the risk of phototoxicity.



Comfortable operating posture

The ergonomically designed optical head with built-in beam splitter and adjustable eye pieces allows the surgeon to maintain a comfortable posture throughout the surgery. A key component to this comfort is the variable angle binocular tubes that allow for the setting of a personal viewing position from 45 to 90 degrees. This flexibility ensures a comfortable operating stance even when using OFFISS.

Coarse focusing*

Coarse focusing mechanism allows the optical head to be quickly elevated during surgery and then brought back to the desired working position. This feature is particularly useful during IOL insertion and other procedures that momentarily require more space between the patient and the microscope.

Apochromatic optics

The optics of the system are designed to greatly limit the effect of chromatic aberration.

Anti stain coating

The OMS-800 employs an anti-stain coating - the optical components remain clear and maintain their quality for a longer period of time.

Multifunction footswitch enhances operating efficiency

The multi-function footswitch permits the surgeons to control virtually all of the OMS-800 functions without removing their hands from the operative field. Without any hand movement, the surgeon can adjust the illumination, zoom magnification, focus, illumination angle and X-Y positioning. On conventional microscopes, many of these functions have to be performed by assistants. The control layout on the footswitch is conveniently arranged in the most accepted configuration.

Increased working distance

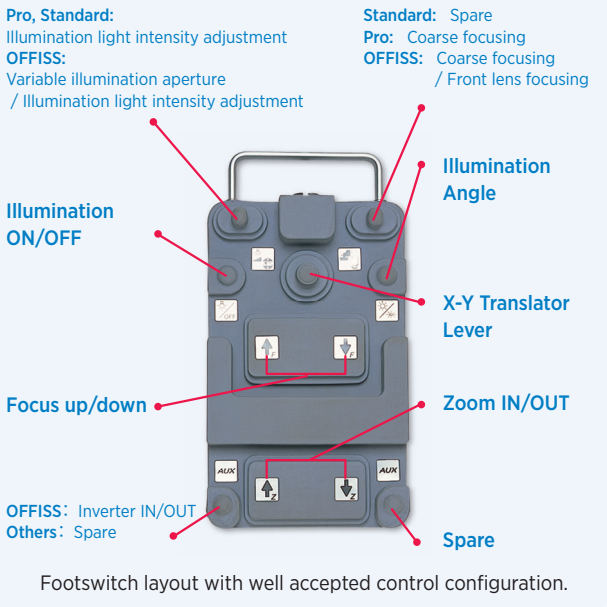
The OFFISS system provides an extremely comfortable working distance between the OFFISS lenses and the patient's eye.

Easy bulb exchange

The illumination bulb can be simply replaced, accessing the lamp housing using a rotating lever. A warning lamp indicates when the spare lamp is burned out to ensure there is always an operational bulb available.

Electromagnetic locking system

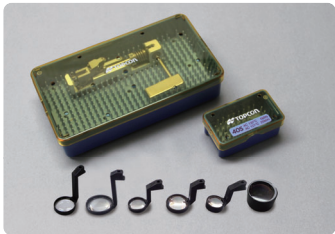
The optical head can be quickly and accurately positioned for surgery and held in place by the fast acting electromagnetic locking system. (OFFISS/Pro)



* Refer to the component list for further detail.

OPTIONAL ACCESSORIES

OMS-800 MODELS



OFFISS lens set

Standard components include; front lens holder, anterior segment observation lenses, 40D, small 40D, 80D, 120D, and small 120D. The boxes and lenses are easily maintained using an autoclave.

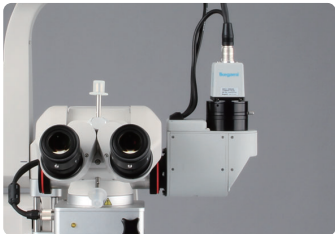
* Each front lens can be ordered separately.



Assistant microscopes

The assistant microscope provides an additional viewer with bright, crisp images on the same visual axis as those seen by the main surgeon.

The angle of the binocular eyepieces is adjustable from 45 to 90 degrees, offering the assisting surgeon a comfortable viewing angle. In addition, a separate focus adjustment is available for the assistant surgeon.



TV relay lens

The compact TV relay lens permits the attachment of a CCD camera useful for documentation and teaching. The relay lens accepts the most popular 1/2" and 1/3" CCD cameras with C mount or bayonet mount and is easily connected to the OMS-800.



Slit Illuminator

The MS-SI01 slit illuminator is a newly developed accessory, designed for the corneal refractive surgeon to aid in the assessment of corneal interface in lamellar procedures such as DSAEK and DALK. It features an extremely thin slit beam of 50µm and a LED illumination source. It can also be used to observe corneal and anterior chamber depth in cataract surgery.

* Microslit can be used in other brand microscopes.
Please ask a TOPCON representative for a list of compatible models.



Intraoperative fluorescein observation

With this attachment, the surgeon can performance fluorescein angiography during the surgery, allowing real-time assessment of the retinal condition.

* available with OMS-800 OFFISS only.



OMS-800 OFFISS

OFFISS offers a new scope possibilities in for vitreoretinal surgery. Equipped with the OFFISS lenses mechanism, electromagnetic brakes and sophisticated electronics, this model is the highest specification for intravitreal surgery, as well as other ophthalmic procedures.

OMS-800 OFFISS CBS

The CBS model offers a changeable beam splitter controlled using a lever, allowing the beam to be split 80/20 or 50/50. When connected to a TV camera, the 50/50 mode allows clearer TV images for documentation or teaching purposes.

OMS-800 Pro

Electromagnetic brakes and sophisticated electronics confer the OMS-800 Pro the flexibility to facilitate virtually any type of ophthalmic surgical procedure.

OMS-800 Standard

Equipped with most of the state-of-the-art features of the OMS-800 range, the OMS-800 Standard answers the need for a simpler, easy to use operation microscope. Manual brakes and ease of mobility make the OMS-800 an affordable yet advanced unit for all ophthalmic procedures.



Components

	OMS-800 OFFISS	OMS-800 OFFISS CBS	OMS-800 Pro	OMS-800 Pro CBS	OMS-800 Standard	OMS-800 Standard CBS
OFFISS	○	○	—	—	—	—
Electromagnetic locking	○	○	○	○	—	—
Coarse focusing	○	○	○	○	—	—
Inverter	○	○	—	—	—	—
Apochromatic optics	○	○	○	○	○	○
Beam splitter	○	—	○	—	○	—
Changeable beam splitter	—	○	—	○	—	○
Illumination angle	Full Illumination (±2°, +4°) / ±2° / Yellow Filter (+4°)					