

Digital Slit Lamp

SL-D701



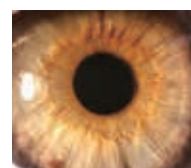
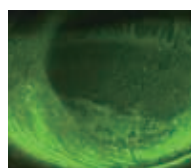
SL-D701 DIGITAL SLIT LAMP

LED light source
sharp, bright and homogeneous illumination



SL-D701 WITH LED AND HALOGEN LIGHT SOURCE*

- » Illumination boost
- » New DC-4 digital camera
 - High resolution
 - Smart capture function
 - Still Image with auto exposure function
 - Seamless integration
 - Infra Red sensitivity
- » Blue free filter™ system for superior fluorescent viewing
- » New BG-5 LED back ground illumination **
 - Meibomian gland observation capability



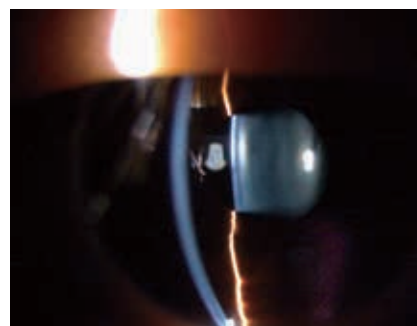
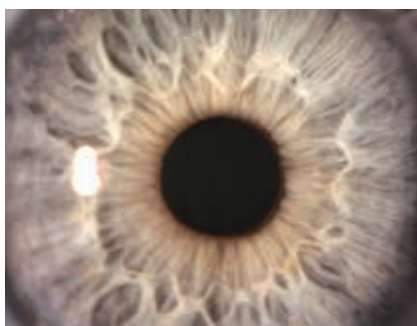
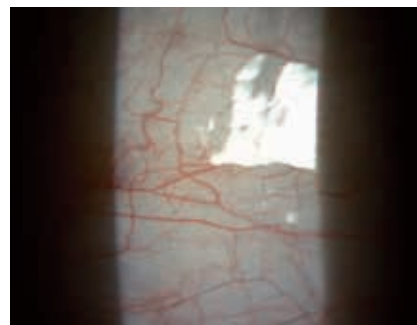
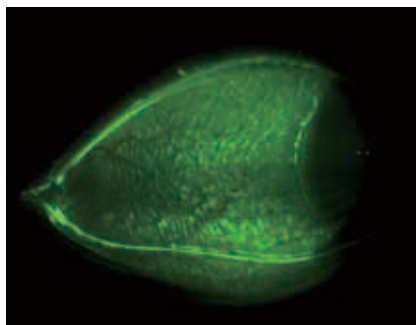
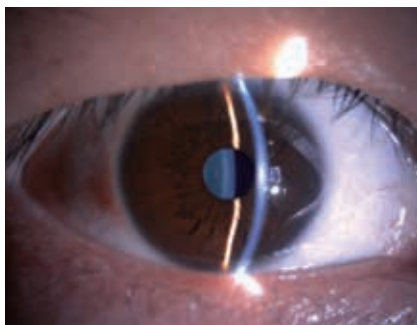
* Factory option

** Fluo model

ADVANTAGES & BENEFITS OF LED

LED LIGHT SOURCE

The new LED illumination source allows observation under a brighter, more homogeneous condition than the conventional halogen bulb source. The short wavelength of the LED spectrum enables the operator to see minute details such as flare in the anterior chamber and vitreous. Color temperature remains uniform when adjusting light intensity insuring consistent viewing results throughout the entire eye's optical path.



LED FEATURES

- » Brighter illumination enhances observation of the eye structures
- » LED wavelength characteristics allow for easy visualization of subtle details such as flare and inflammation
- » Consistent color temperature throughout the entire light intensity adjustment
- » Substantial reduction in bulb replacement
- » Energy efficient and cost saving





DC-4

Digital camera

SMART CAPTURE FUNCTION

With a simple push of the joystick trigger the operator can obtain a rapid series of images that are quickly saved for later revision and selection. The Smart Capture function minimizes failed images or blurry pictures, especially with children and in conditions of excessive blinking.

STILL IMAGE WITH AUTO EXPOSURE (AE) FUNCTION

By adjusting the shutter speed and sensor gain, the brightness of the image will be automatically compensated. As a result the live image used for alignment and the final picture will have the same color balance.

LIVE VIEW

When using the external PC software in conjunction with the DC-4, a real time live image will be seen on the monitor to facilitate centering and focusing. The live image can be used to show the eye condition to third party individuals for teaching and education. Sensitivity, shutter speed and white balance can be adjusted from the computer.

VIDEO CAPABILITY

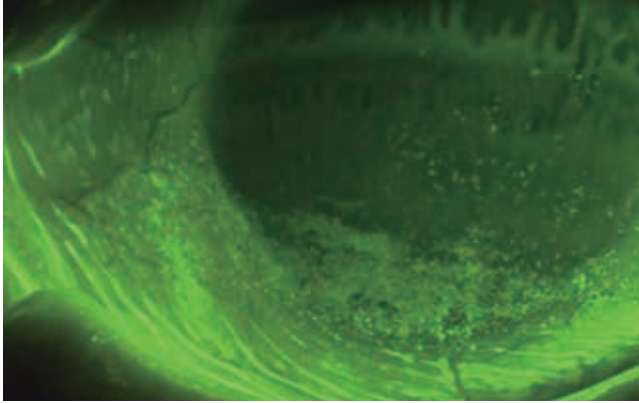
The DC-4 allows for easy acquisition of video clips of the eye movements without interfering with the examination.

ADDITIONAL FILTERS

BLUE FREE FILTER™ SYSTEM

Topcon Blue Free Filter observation can be carried out using the exciter* filter for slit lamp and barrier* filter for slit lamp. Tear flow details and scars can be clearly viewed with less glare or pooling.

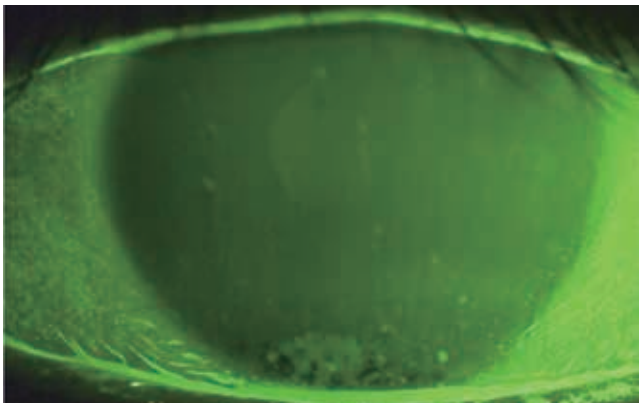
* Fluo model



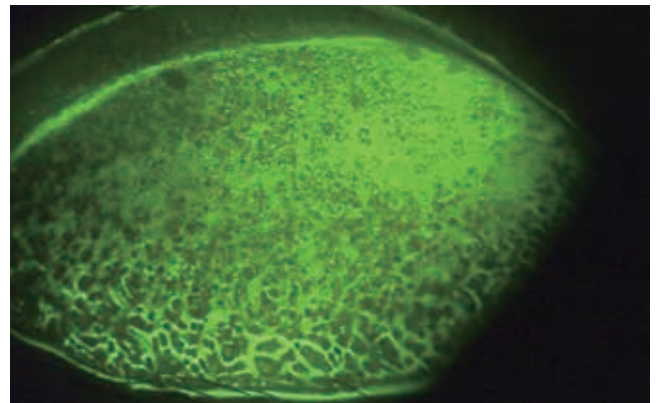
Blue Free Filter™



Cobalt Blue Filter



Blue Free Filter™

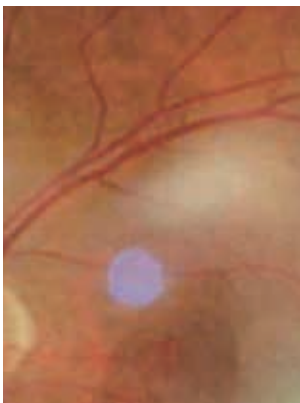


Blue Free Filter™

Images provided by Toru Noda, MD, PhD, Department of Ophthalmology, Tokyo Medical Center

AMBER FILTER

A warmer, more pleasant tone of the skin and eye structures can be obtained by inserting the amber filter. This color correction filter produces a pleasant coloration that is especially useful in slit lamp imaging.



Amber



Non Amber



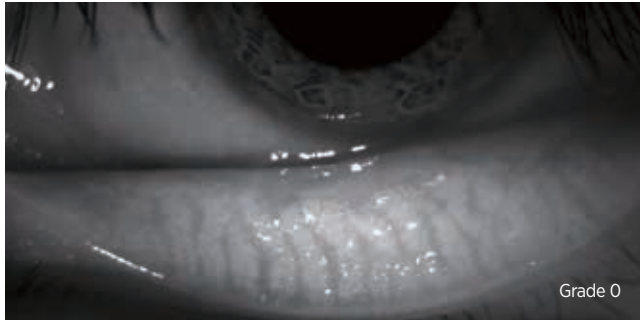
MEIBOMIAN GLAND OBSERVATION & OTHER FEATURES

MEIBOMIAN GLAND OBSERVATION

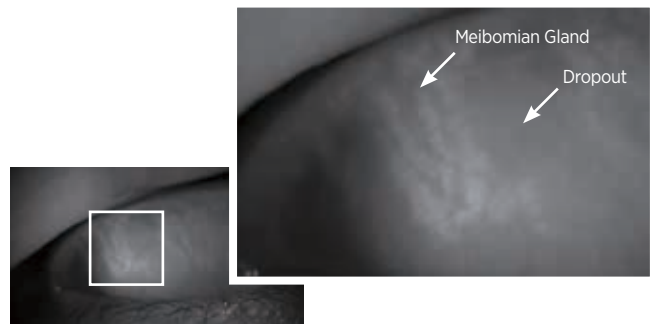
Meibomian gland observation can be performed and documented using the optional meibomian gland observation system*. Because of the high resolution of the DC-4, fine detail of glandular acinus and subtle changes of meibomian glands can be seen and photographed for a better understanding of its condition.

* System of SL-D701 + DC-4 (optional) + BG-5 (optional)

MEIBOSCORE: GRADE 0 ~ 3



MEIBOMIAN GLAND CLOSE-UP!



* Images and meiboscore provided by: Reiko Arita, MD, PhD, Itoh Clinic, Department Ophthalmology, the University of Tokyo School of Medicine

RIGHT / LEFT EYE INDICATOR

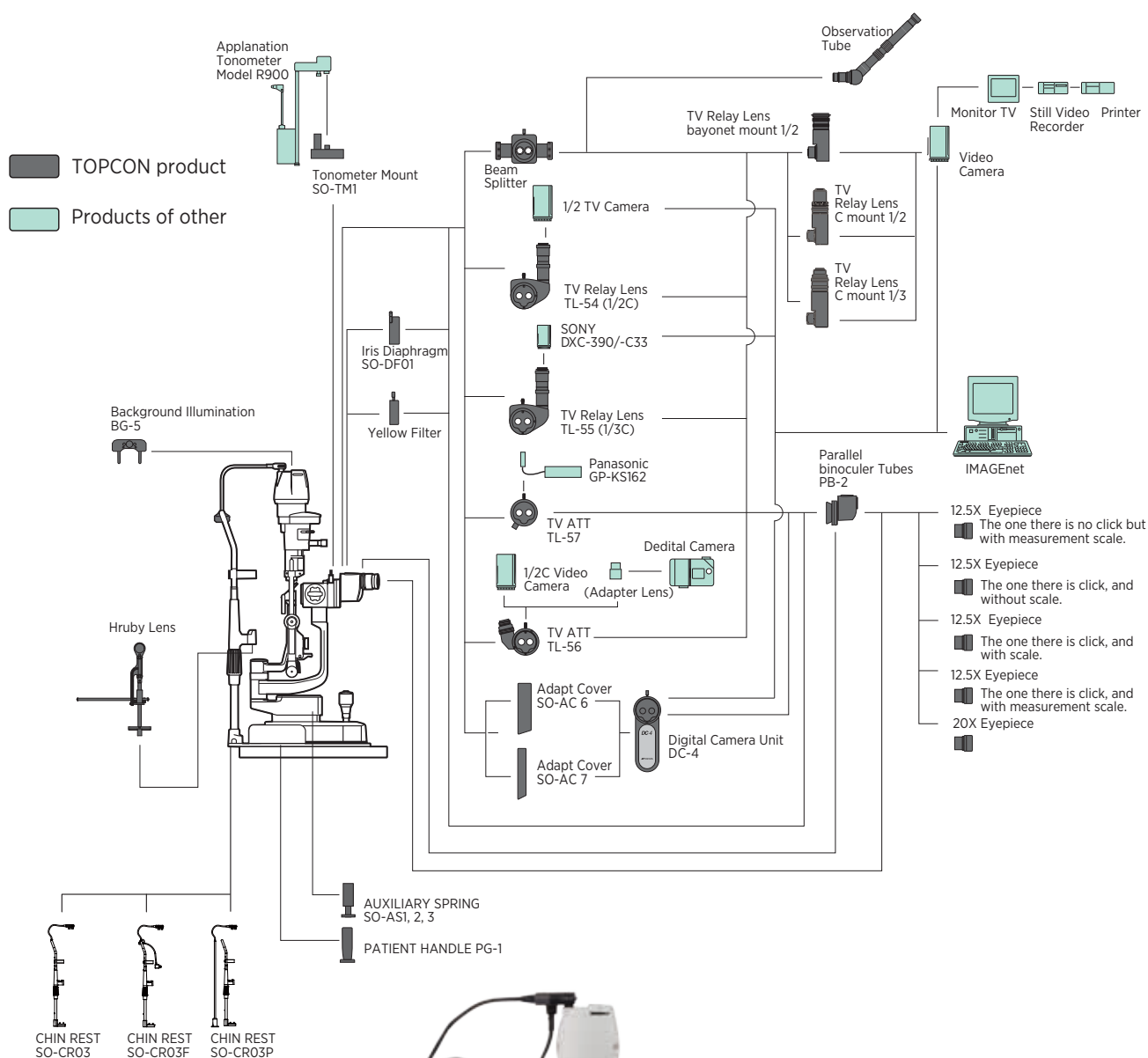
When in photography mode, the SL-D701 automatically recognizes the patient's right and left eye, simplifying the photographic procedure.

MORE THAN JUST THE BASIC FUNCTION

Versatile lens coatings, including a preservative layer, and the use of apochromatic optics enhance the observation and require less maintenance.



SYSTEM CHART



SL-D701 Digital slit lamp



* Shown with optional DC-4 digital attachment, optional handle bars and optional electric table.

Specifications

Microscope unit		
Type		Galileo type
Magnification		Drum, 5-step magnification
Magnification steps		6/10/16/25/40
Overall magnification (actual vision field)		6.37 (ø35.1mm)
		9.94 (ø22.5mm)
		15.87 (ø14.1mm)
		25.37 (ø8.8mm)
		39.62 (ø5.6mm)
Eyepiece lens	Magnification	12.5x
	Diopter adjustment range	-5D to +5D
Binocular tubes		PD adjustment: 55 to 78mm
Illumination unit		
Illumination field	Slit width	0 to14mm, can be altered gradually(14mm=circle)tion)
	Slit length	14 to1mm, can be altered gradually(14mm=circle)
	Aperture diameter	ø14, 10, 5, 2, 1, 0.2 mm
Slit direction		Vertical to horizontal, can be altered gradually
		Inclination: 5°/10°/15°/20°
		Side swing
Filter		Blue filter, red-free filter, amber filter, UV cut filter (normal use), IR cut filter (normal use), ND filter (13% transmission), exciter filter for slit lamp*, barrier filter for slit lamp*
Illumination lamp	Halogen type:	12V, 30W
	LED type:	3A, 10W
Base unit		
Forward-backward movement		90mm
Right-left movement		100mm
Vertical movement		30mm
Amount of movement in all directions		12mm
Chinrest unit		
Amount of vertical movement of chinrest		80mm
Fixation target **		Fixation target with diopter adjustment
		Luminous fixation target
Fixation lamp		LED (Red)
Other Specifications		
Dimensions	w/ Table	550mm(W) x 420mm(D) x 752 to 782mm(H)
	w/ Unit Table	440mm(W) x 397mm(D) x 752 to 782mm(H)
	w/o Table	329mm(W) x 396mm(D) x 652 to 682mm(H)
	w/o Table and Chinrest	329mm(W) x 331(304)mm(D) x 652 to 682mm(H)
	Weight: w/ Table	19kg
	w/ Unit Table	18kg
	w/o Table	13kg
	w/o Table and Chinrest	11.5kg
	Table size	550mm x 370mm
	Unit Table size	440mm x 350mm
	Height from the top to patient's eye	375mm
Power Supply		100-240V AC, 50-60Hz, 110VA



TOPCON CORPORATION



TOPCON CORPORATION



TOPCON CORPORATION

IMPORTANT

Subject to change in design and/or specifications without advanced notice.

In order to obtain the best results with this instrument, please be sure to review all user instructions prior to operation.

Topcon Europe Medical B.V.

Essebaan 11; 2908 LJ Capelle a/d IJssel; P.O. Box 145;
2900 AC Capelle a/d IJssel; The Netherlands
Phone: +31-(0)10-4585077; Fax: +31-(0)10-4585045
E-mail: medical@topcon.eu; www.topcon-medical.eu

Topcon Danmark

Praestemarksvej 25; 4000 Roskilde, Danmark
Phone: +45-46-327500; Fax: +45-46-327555
E-mail: info@topcondanmark.dk
www.topcondanmark.dk

Topcon Scandinavia A.B.

Neogatan 2; P.O. Box 25; 43151 Mölndal, Sweden
Phone: +46-(0)31-7109200; Fax: +46-(0)31-7109249
E-mail: medical@topcon.se; www.topcon.se

Topcon España S.A.

HEAD OFFICE; Frederic Mompou, 4;
08960 Sant Just Desvern; Barcelona, Spain
Phone: +34-93-4734057; Fax: +34-93-4733932
E-mail: medica@topcon.es; www.topcon.es

Topcon Italy

Viale dell' Industria 60;
20037 Paderno Dugnano, (MI) Italy
Phone: +39-02-9186671; Fax: +39-02-91081091
E-mail: info@topcon.it; www.topcon.it

Topcon France

BAT A1; 3 route de la révolte, 93206 Saint Denis Cedex
Phone: +33-(0)1-49212323; Fax: +33-(0)1-49212324
E-mail: topcon@topcon.fr; www.topcon.fr

Topcon Deutschland GmbH

Hanns-Martin-Schleyer Strasse 41;
D-47877 Willich, Germany
Phone: (+49) 2154-885-0; Fax: (+49) 2154-885-177
E-mail: med@topcon.de; www.topcon.de

Topcon Polska Sp. z o.o.

ul. Warszawska 23; 42-470 Siewierz; Poland
Phone: +48-(0)32-670-50-45; Fax: +48-(0)32-671-34-05
www.topcon-polska.pl

Topcon (Great Britain) Ltd.

Topcon House; Kennet Side; Bone Lane; Newbury
Berkshire RG14 5PX; United Kingdom
Phone: +44-(0)1635-551120; Fax: +44-(0)1635-551170
E-mail: medical@topcon.co.uk; www.topcon.co.uk

Topcon Ireland

Unit 276, Blanchardstown; Corporate Park 2
Ballycoolin; Dublin 15, Ireland
Phone: +353-18975900; Fax: +353-18293915
E-mail: medical@topcon.ie; www.topcon.ie