

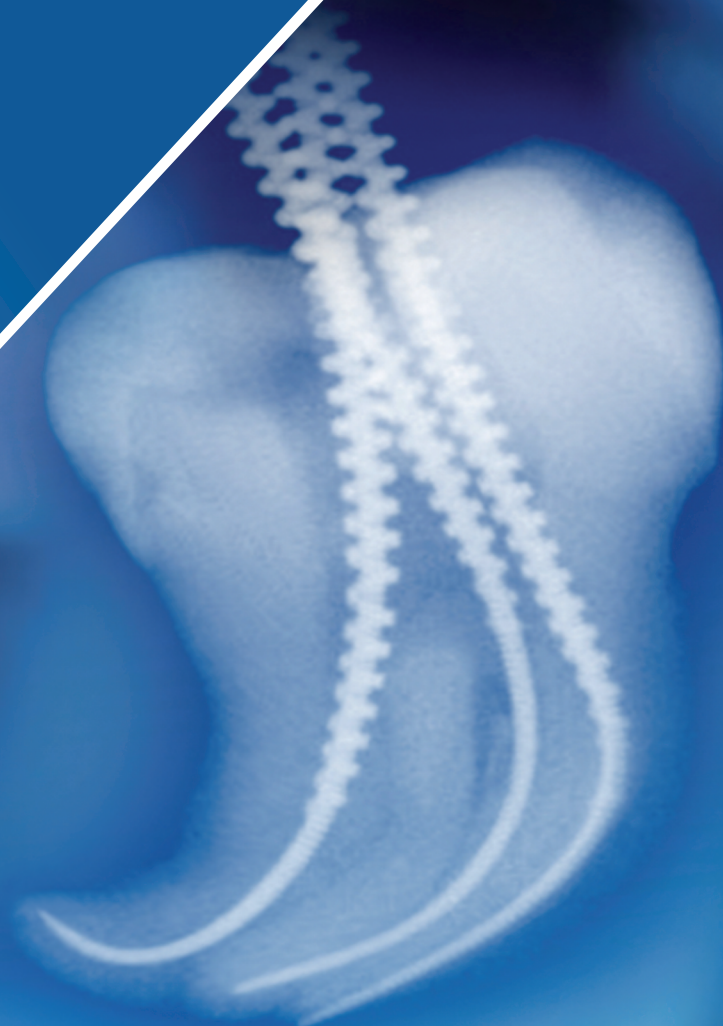
CORDLESS ENDO MOTOR  
WITH BUILT-IN APEX LOCATOR

**EndoEst Motor-Mini**

endoLINE  
GEOSOFT

endoLINE  
GEOSOFT

[www.geosoft.ru/en](http://www.geosoft.ru/en)



Cordless Endo Motor with Built-in Apex Locator



GE26R.000.000

EndoEst Motor-Mini<sup>R/RL</sup> is a cordless, lightweight, user ergonomic friendly, simple to use Endo motor for the daily performs of Endodontics. EndoEst Motor-Mini complies with the majority of rotary systems currently existing in the market. EndoEst Motor-Mini equipped with innovative safety features, such as Smart "torque control" combined with the Integrated Apex-locator, for treatment safety.

Key Features & Benefits:

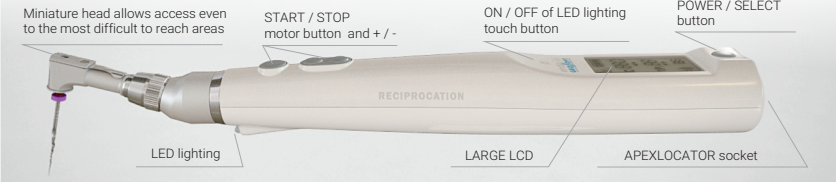
- Wide range of rotary and reciprocating modes enables easy presets of dentist set speed / torque parameters in the device memory.
- Built-in apex locator controls the file's rotation movement upon reaching the Apex area by performing rotation stops / alert signal and while automatically starts Reverse mode. Thanks to this unique function, clinicians are able to perform better accurate and safe root canal preparation of the apical section.
- Built-in Smart Torque Control (Auto-twist or Auto-stop upon reach of the set torque) minimize the risk for file fracture.
- High-precision micro motor made by the leading Swiss manufacturer - "Faulhaber" guarantees high reliability of the device.
- Quick-detachable miniature head with positional capabilities of 360° ensures maximum visibility and access to "difficult" zones.
- Lightweight ergonomic design, well-balanced hand piece.
- Powerful Li-Po battery enables continues treatment not less than 30 patients at one charge.
- Large bright LCD display with various control settings, ensure operator comfort use.
- "Soft start" optimizes the mechanical characteristics of the rotary file which add to the safe use of the device.
- Powerfull LED illumination source , enhances the visibility of the operating area.



EndoEst  
Motor Mini

Available modifications

Principal characteristics	"Basic" (B)	"Apexlocation" (A)	"Apexlocation-L" (AL)	"Reciprocation" (R)	"Reciprocation-L" (RL)
Built-In Apex Locator finder	-	+	+	+	+
Possibility of connection an external apex locator	+	-	-	-	-
Audible alarm with changing pitch and frequency when file approaches to the apical constriction	-	+	+	+	+
Programmable	+				
Reciproc programs	-	-	-	+	+
Illumination of operational area	-	-	+	-	+



Accessories

- Head with friction fixing GE.99.124.000;
- Lip clip "Oral Hook" GE.99.123.000;
- Cable "Signal Line" (micro pin 2.0, single) GE.99.162.000;
- Adapter for lubrication GE.99.161.000,\*
- Seal rings GE.99.133.000;
- Mains charger GE99.049.000.



\* Not included in the delivery set, to be sold separately