



DR. SIGAL JACOBSON

The Uveneer and Uveneer Extra direct composite template systems were created by Australian-based dentist Dr. Sigal Jacobson. She is passionate about conservative cosmetic dentistry and puts emphasis on making composite veneers quicker, better-looking, and more cost effective. Dr. Jacobson found that creating traditional freehand direct composite veneers was time consuming and unpredictable. She saw a need for a better way to create long-lasting esthetic composite veneers, and she spent years working with engineers to create an innovative anterior facial matrix to make the Uveneer direct composite template systems possible.



1. Before. The patient didn't like the gaps in her teeth and her gums showing while smiling.



2. The Gemini™ soft tissue laser was used in order to have a smooth cut, minimal bleeding, and faster healing time.



3. Healed gums 3 weeks later.



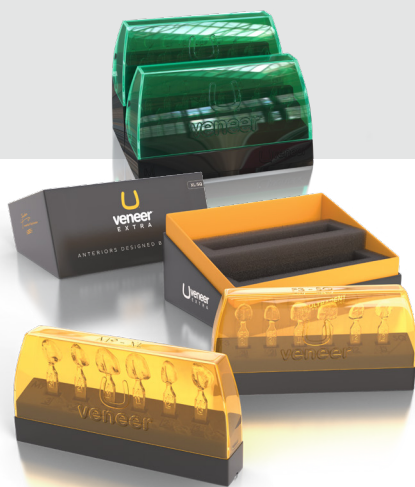
4. Apply a phosphoric acid etchant (Ultra-Etch™ etchant) followed by an adhesive that shows high bonds strengths (Peak™ Universal Bond).



5. The dentin shade is applied directly to the tooth, while the enamel shade is pressed inside the Uveneer Extra SQ (F3) template. Once the template is pressed on, clean the margins and cure through the template. VALO™ curing light is recommended.



6. Remove excess at the periphery with the Jiffy™ Universal polishing system. Finish the polish off with Ultradent™ Diamond Polish Mint paste for a lasting shine. Notice the natural shape achieved with the SQ (F3) template and the match of the composite shade with the patient's own teeth.



Tip: In order to mask a darker tooth shade, it is recommended to do two layers of composite. Complete the first layer with a packable paste composite—using a brighter and more opaque dentin shade. Place this layer of composite directly on the tooth. For the second layer (and to capture the fine details of the Uveneer Extra templates) place a small amount of a high-fill flowable composite into the template. Pressing a high-fill flowable composite onto the packable composite creates dimension in the tooth and allows the fine details to show after curing.