

FM-180 Specifications

Recorder	
Dimension	(W)65 X (H)62 X (D)18mm
Weight	78g (include Battery and MMC Card)
Power	AAA Alkaline (LR-03) X 1
Media	Multi Media Card 64MB
Switch	Event and On (ON) / Enter

Multi Media Card	
Memory	64MB
Interface	MMC Standard
Dimension	24mm X 1.4mm X 32mm (WXHxD)
Weight	1.5g

ECG	
Channels	Unipolar / Bipolar 2ch, Unipolar/Bipolar 3ch
Recording	24 hours
FrequencyResponse	0.05 ~ 40HZ (HPF 0.67Hz)
Sampling Frequency	125Hz
Pacemaker Detection	Any single channel
	4 grades by switching

Position Sensing	
Vertical acceleration detection	
Tri-axial body position detection	

SCM-510 Holter Software

The WINDOWSTM based software performs multiple tasks including sophisticated compilation of data for detailed reports.

SCM-510 Operating Environment

Personal Computer	
OS	Windows XP Professional (English version)
CPU	Pentium III 1 GHz or higher
RAM	512MB or more
Hard disk free space	20GB or more (including the program)
Display graphic mode	1280 x 1024
Display font size	Normal size
CD-ROM drive	12 x or higher

Card reader	
Card type	Multimedia card

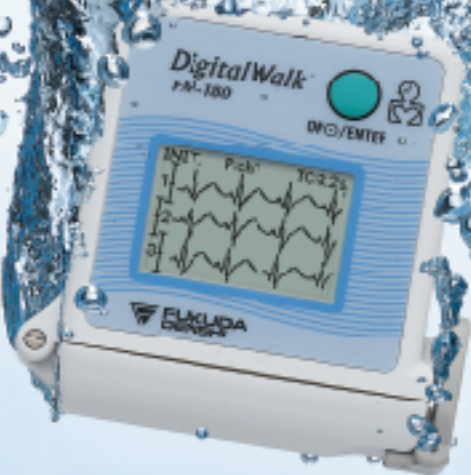
Printer	
Type	Laser printer
Resolution	600dpi or more
RAM	64MB or more
Paper size	A4 or Letter

Software Specifications	
Analysis	Number of analysis channels
	3 channel
	Arrhythmia types
	10 types
	Morphology types
Measurement	8 types x 64 patterns
	Program types
	3 types
	Analysis Time
	approximately 2 min/patient
Search	Arrhythmia measurement
	ST measurement
	HRV measurement
	Manual mode, Auto mode
	Lorenz plot
Printing	Pacemaker measurement
	Event search
	ST event search
	Trend search
	RR search
Multitasking	Registered wave search
	Report types
	20 types (Standard ECG reports)
	10 types (HRV measurement)
	6 types (Lorenz plot)
	Program types
	3 types
	Morphology
	Search
	Measurement

Digital Holter ECG Recorder

DigitalWalk

FM-180



FUKUDA DENSHI reserves the right to change specifications without notice.





# New Standard for durability and performance

## Durability in extreme environments

### Water Proof Design

The FM-180 24 hour Holter recorder sets a new standard for durability and performance in extreme environments, while providing new information about a patient's anatomical positions during testing. The FM-180 was designed for use in aquatic environments making it suitable for exercise physiology labs, sports medicine and health clubs. The waterproof design allows patients to maintain normal life-style by not interfering with routine bathing or showering.

### For Exercise and Sports

Sports Medicine and training programs will benefit from the sophisticated design of the FM-180, which has been designed to the rigorous standards of the JIS protection class 8. (IPX8)

### Smart Tri-axial Sensors

The FM-180 uses smart Tri-axial sensors that simultaneously record and report a patient's body position in relation to recorded ECG.

This innovative technology helps physicians determine if changes in wave-forms are caused by body position or underlying physiology.

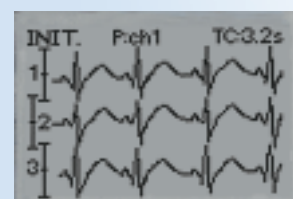
### Easy to Use Flexible Display

The FM-180 eliminates complicated programming by featuring a simple selector button that allows users to choose the information they want displayed. A simple click of the button allows the user to display either 2 or 3 channels of ECG or select Heart Rate.

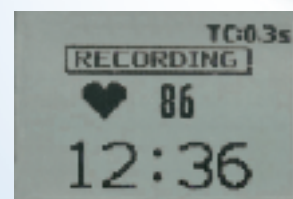
## Reliability

### Secure Data Storage

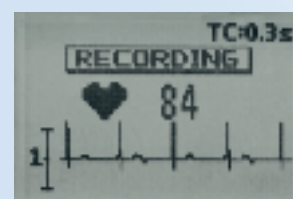
The FM-180 simultaneously stores data on both its memory card and internal solid state storage. This convenient feature insures against repeat studies that result from lost data.



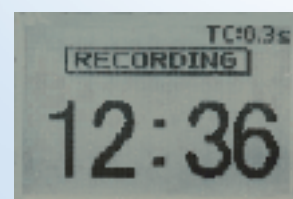
▲ 2/3 Ch ECG



▲ HR and time



▲ HR and ECG



▲ Time

## Flexibility

### Flexible Recording Choices

The FM-180 allows the user to choose between 2 or 3 channels of ECG recording.

In addition, users can select either unipolar or bipolar lead configurations. The FM-180's innovative design provides user the choice of waterproof or traditional snap electrodes.



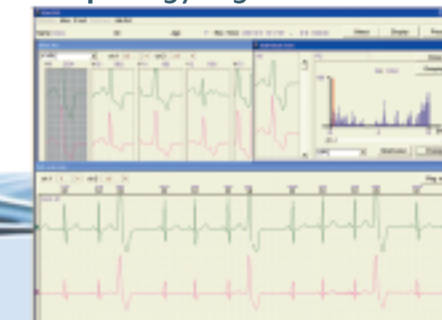
▲ Disposal Water Proof Electrode

## Holter Software

### Fast and easy to review and edit reports

WINDOWS™ based software performs multiple tasks including sophisticated compilation of data for detailed reports

### Morphology Page



The morphology page provides the reviewing physician a fast and easy tool to globally edit reports. Morphology review provides the user examples of the predominate morphologies that occurred during the test.

The reviewer can quickly spot both uniform and multiform VPC's. Artifact can be quickly identified and relabeled correcting heart rates and beat counts throughout the final report. At any time during the editing process, the FM-180 also allows the user complete beat by beat verification.

### Powerful Search Tools



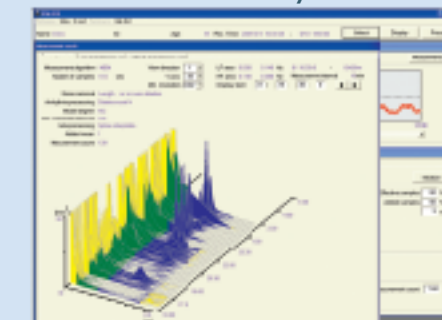
The FM-180 provides a simple to use Search Page that helps the user find and document arrhythmic events as well as the longest and shortest R-R intervals. Fast and simple verification can be conducted on the Search Page, and because the Search Page guides the user to the location of significant events, re-labeling of beats and selection of strips for the final report is faster, more accurate and less demanding on the user.

### ST Event Review



The FM-180 features a fast and easy to use ST Event Review page. Physicians can verify all significant ST events for accuracy. Flexible software provides the user the ability to edit and re-label events based on the appropriate ST thresholds.

### Evaluation of R-R Intervals and Heart Rate Variability



Easy to use interactive histograms guide the user to changes in R-R intervals. Both R-R intervals and standard deviations are automatically calculated over a 24 hour period. This easy to use tool provides Physicians insight into possible changes of the autonomic nervous system that could help determine a course of treatment.