

Expansion Screws

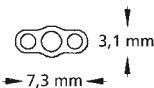
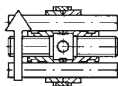
Standard Expansion Screws



600-400-10	1 piece
600-400-30	10 pieces

CE

11 mm



rematitan®-Expansion Screw, Medium

Made of pure titanium.

Skeleton design

For transversal expansion and distalization in upper and lower arch. Pearl-blue plastic directional arrows. Holes in body of screws for better retention in acrylic. Built-in stops prevent screws from coming apart.

Maximum expansion: 7.5 mm

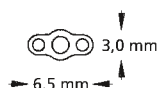
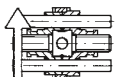
4 x 1/4 turn = 0.80 mm



600-300-10	1 piece
600-300-30	10 pieces
600-300-60	100 pieces

CE

10 mm



Expansion Screw, Mini

Skeleton design

For transversal expansion and distalization in the lower arch or for especially narrow upper arches. White plastic directional arrows. Holes in body of screws for better retention in acrylic. Built-in stops prevent screws from coming apart.

Maximum expansion: 6.5 mm

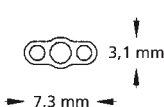
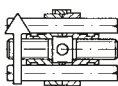
4 x 1/4 turn = 0.70 mm



600-301-10	1 piece
600-301-30	10 pieces
600-301-60	100 pieces

CE

11 mm



Expansion Screw, Medium

Skeleton design

For transversal expansion and distalization in the upper and lower arch. Neon yellow plastic directional arrows. Holes in body of screws for better retention in acrylic. Built-in stops prevent screws from coming apart.

Maximum expansion: 7.5 mm

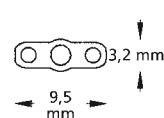
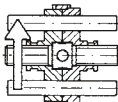
4 x 1/4 turn = 0.80 mm



600-302-10	1 piece
600-302-30	10 pieces
600-302-60	100 pieces

CE

11 mm



Expansion Screw, Maxi

Skeleton design

For transversal expansion in the upper arch. Neon yellow plastic directional arrows. Holes in body of screws for better retention in acrylic. Built-in stops prevent screws from coming apart.

Maximum expansion: 7.5 mm

4 x 1/4 turn = 0.80 mm

Expansion Screw, Magnum

Skeleton design

Extra strong, for transversal expansion in the upper arch and bimaxillary functional gnatho-orthopedic appliances. Neon yellow plastic directional arrows. Holes in body of screws for better retention in acrylic. Built-in stops prevent screws from coming apart.

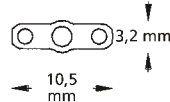
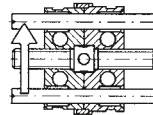
Maximum expansion: 11 mm

4 x 1/4 turn = 0.80 mm

600-303-10	1 piece
600-303-30	10 pieces
600-303-60	100 pieces

CE

14,5 mm



Trapezoidal Expansion Screw

Skeleton design

For narrow maxillas and as activation screw for bimaxillary functional gnatho orthopedic appliances. Neon yellow plastic directional arrows.

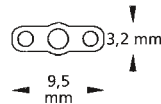
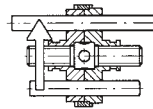
Maximum expansion: 7.5 mm

4 x 1/4 turn = 0.80 mm

600-310-30	10 pieces
-------------------	-----------

CE

14,5 mm
11 mm



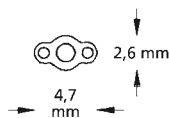
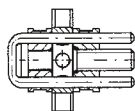
Special Screws



600-502-10	1 piece
600-502-30	10 pieces
600-502-60	100 pieces

CE

← 9,5 mm →



Sectional Screw, Mini

Straight guide pins

For movement of individual teeth. Arrow indicating the opening direction.

Maximum expansion: 4 mm

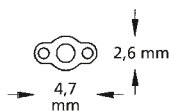
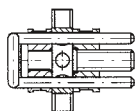
4 x 1/4 turn = 0.35 mm



600-503-10	1 piece
600-503-30	10 pieces
600-503-60	100 pieces

CE

← 9,5 mm →



Sectional Screw, Mini

Angulated guide pins facing down

For movement of individual teeth. Arrow indicating the opening direction.

Maximum expansion: 4 mm

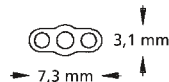
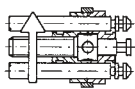
4 x 1/4 turn = 0.35 mm



600-500-10	1 piece
600-500-30	10 pieces
600-500-60	100 pieces

CE

← 12,5 mm →



Sectional Screw, Medium

Straight guide pins

Neon yellow plastic directional arrows. Holes in body of screw for better retention in acrylic. Built in stops prevent screws from coming apart.

Maximum expansion: 6 mm

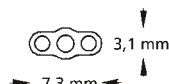
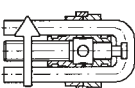
4 x 1/4 turn = 0.40 mm



600-501-10	1 piece
600-501-30	10 pieces
600-501-60	100 pieces

CE

← 13,0 mm →



Sectional Screw, Medium

Angulated guide pins facing down

Neon yellow plastic directional arrows. Guide pins angulated for better placement in acrylic. Holes in body of screws for better retention in acrylic. Built-in stops prevent screws from coming apart.

Maximum expansion: 6 mm

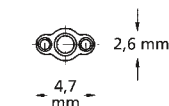
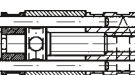
4 x 1/4 turn = 0.40 mm



600-602-30	10 pieces
------------	-----------

CE

← 13,5 mm →



Retraction Screw, Extra Mini

Straight

U-shaped guide pins. For space closing and movement of individual teeth. Arrow indicating the opening direction.

Maximum retraction: 3 mm

4 x 1/4 turn = 0.40 mm

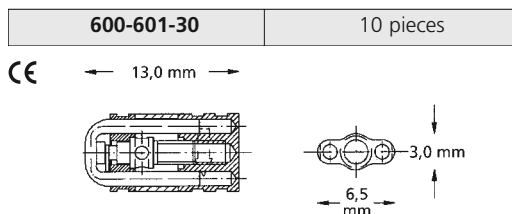
Retraction Screw, Mini

Straight

U-shaped guide pins. For space closing and movement of individual teeth. Arrow indicating the opening direction.

Maximum retraction: 2.5 mm

4 x 1/4 turn = 0.40 mm



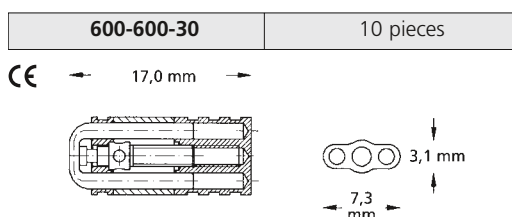
Retraction Screw, Medium

Straight

U-shaped guide pins. For space closing and movement of individual teeth. Arrow indicating the opening direction.

Maximum retraction: 4.5 mm

4 x 1/4 turn = 0.40 mm



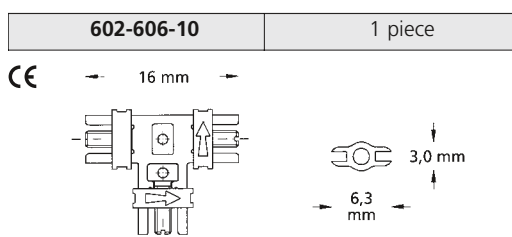
Three Dimensional Screw

(Bertoni)

Combination transversal and protrusion screw for Y-plates. Strengthened guides. Arrow indicating the opening direction.

Maximum expansion: 4 mm per segment

4 x 1/4 turn = 0.35 mm



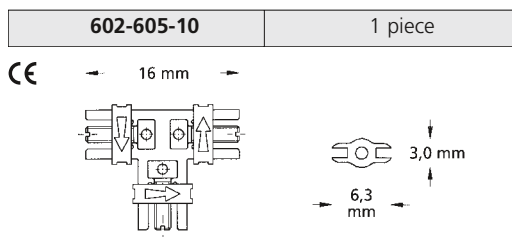
Three Dimensional Screw

(Bertoni)

Three independently controlled movements. Strengthened guides for Y-plates. Arrow indicating the opening direction.

Maximum expansion: 4 mm per segment

4 x 1/4 turn = 0.35 mm



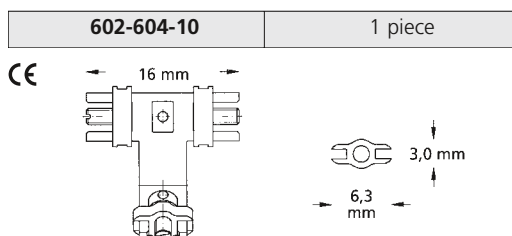
Three Dimensional Screw

(Steiner)

The separately adjustable central connector allows individual fitting to different palate shapes. Strengthened guides. Combination transversal and protrusion screw for Y-plates. Arrow indicating the opening direction.

Maximum expansion: 4 mm per segment

4 x 1/4 turn = 0.35 mm



Special Screws



606-600-00	1 piece
606-600-30	10 pieces

CE

← 12 mm →



Fan-type Expansion Screw

For sectional expansion of maxillary anteriors. Plate sections are opened fanwise. Arrow indicating the opening direction.

Maximum expansion: 7 mm

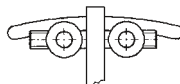
4 x 1/4 turn = 0.80 mm



606-701-00	1 piece
606-701-30	10 pieces

CE

← 20,0 mm →



Mandibular Bow Screw

(Mueller)

For lateral and sagittal anterior expansion of the mandible. Arrow indicating the opening direction.

Maximum expansion: 5 mm

4 x 1/4 turn = 0.80 mm



600-000-00	1 Assortment
------------	--------------

CE

"Flexible" Forward Thrust Double Plate System (Schaneng)

For the treatment of distal malocclusions. The flexible forward thrust double plate system is a new development and differs from conventional systems in the flexibility of the intermaxillary elements.

Starter set consisting of:

- 3 x Screws with guide ridge for forward thrust double plate REF 600-001-00
- 1 x Adapter, narrow REF 600-003-00
- 1 x Adapter, wide REF 600-004-00
- 1 x Locating template REF 600-005-00
- 1 x Instructions



600-001-00	1 piece
600-001-30	10 pieces

CE

"Flexible" Forward Thrust Double Plate System (Schaneng)

Guide Ridge

With palatal expansion screw.

Length of Guide Ridge: 14 mm

"Flexible" Forward Thrust Double Plate System (Schaneng)

Guide Ridge

Without palatal expansion screw.

Length of Guide Ridge: 14 mm

600-002-00	1 piece
600-002-30	10 pieces

CE



"Flexible" Forward Thrust Double Plate System (Schaneng)

Guide Ridge Adapter

To produce the diagonal level in the lower jaw.

Adapter, narrow

Width: 14 mm

Adapter, wide

Width: 18 mm

600-003-00	10 pieces
------------	-----------



600-004-00	10 pieces
------------	-----------



Locating Template (Schaneng)

Made of stainless steel

The locating template supplied with the system ensures that the guide ridge slides properly on the lingual plate at a 60° angle.

600-005-00	1 piece
------------	---------



Expansion Screw for Split Activator

For separate expansion of upper and lower arches. Arrow indicating the opening direction.

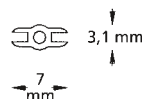
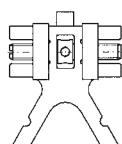
Maximum expansion: 7 mm

4 x 1/4 turn = 0.80 mm

600-610-00	1 piece
600-610-30	10 pieces

CE

14,5 mm



Norwegian Plate Screw

(Weise)

Sturdy screw for Norwegian plates and activators. Arrow indicating the opening direction.

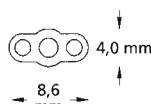
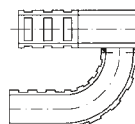
Maximum expansion: 5 mm

4 x 1/4 turn = 0.90 mm

603-000-00	1 piece
------------	---------

CE

14,0 mm



Special Screws



602-806-11	1 piece
------------	---------

CE 0483

With Safety Key

602-806-01	1 piece
602-806-51	10 pieces

CE 0483

Without Safety Key

Variety Expansion Screw

Screw with straight retention legs

For the fixed appliance technique. Can be widely used in the upper and lower jaw, for distalisation, mesialisation of posterior teeth, or for osseous distraction in the lower jaw. Also for palatal expansion.

- Small dimensions with maximum expansion
- Solder free
- Break resistant retention legs and stable guidance throughout the entire expansion
- The integrated spindle friction prevents unwanted turning back
- Permanently laser marked arrow on the body of the screw indicates the opening direction and maximum expansion
- Screw can be tied down once desired expansion has been reached

Screw: 9.6 mm

Maximum expansion: 12 mm

4 x 1/4 turn = 0.80 mm



602-809-11	1 piece
------------	---------

CE 0483

With Safety Key

602-809-01	1 piece
602-809-51	10 pieces

CE 0483

Without Safety Key

Variety SP (small palate) Expansion Screw

Screw with straight retention legs

For the fixed appliance technique. Can be widely used in the upper and lower jaw, for distalisation, mesialisation of posterior teeth, or for osseous distraction in the lower jaw. Also for early palatal expansion.

- Especially suitable for very narrow jaws
- Makes it possible to bend the retention legs very close to the screw body
- Small dimensions with maximum expansion
- Solder free
- Break resistant retention legs and stable guidance throughout the entire expansion
- The integrated spindle friction prevents unwanted turning back
- Permanently laser marked arrow on the body of the screw indicates the opening direction and maximum expansion
- Screw can be tied down once desired expansion has been reached

Screw: 9.6 mm

Maximum expansion: 12 mm

4 x 1/4 turn = 0.80 mm

Titanium Palex® Maxi - 12

Special Expansion Screw with straight retention legs made of pure titanium
New improved quality

For mid-palatal suture separations by means of fixed appliances without the need for acrylic plates. Can be laser welded with titanium framework or Titanium Direct Bond Pads REF 799-210-00.

Screw: 14.4 mm

Maximum expansion: 12 mm

4 x 1/4 turn = 0.80 mm

602-824-11	1 piece
-------------------	---------

CE 0483

With Safety Key

602-824-01	1 piece
602-824-51	10 pieces

CE 0483

Without Safety Key



Titanium Direct Bond Pads

Anatomically contoured.

The titanium bonding bases are laser structured for the direct bond technique, specifically for the direct bonding of RPE appliances in conjunction with the Titanium Palex® Titanium Maxi - 12.

799-210-00	10 pieces
-------------------	-----------

CE 0483



Palex® Mini - 7

Special Expansion Screw with straight retention legs

New improved quality

For mid-palatal suture separations by means of fixed appliances without the need for acrylic plates.

- Built-in stops prevent the screws from coming apart once maximum expansion has been obtained
- Small dimensions with maximum expansion
- Solder free
- Break resistant retention legs, stable guidance throughout complete expansion
- The integrated spindle friction prevents unwanted turning back
- Permanently laser marked arrow on the body of the screw indicates the opening direction and maximum expansion
- Screw can be tied down once desired expansion has been reached

Screw: 9.4 mm

Maximum expansion: 7 mm

4 x 1/4 turn = 0.80 mm

602-816-11	1 piece
-------------------	---------

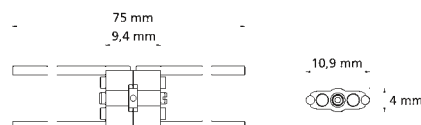
CE 0483

With Safety Key

602-816-01	1 piece
602-816-51	10 pieces

CE 0483

Without Safety Key



Special Screws



602-817-11	1 piece
-------------------	---------

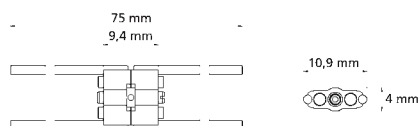
CE 0483

With Safety Key

602-817-01	1 piece
602-817-51	10 pieces

CE 0483

Without Safety Key



Palex® Mini - 7

Special Expansion Screw with bent retention legs

New improved quality

For mid-palatal suture separations by means of fixed appliances without the need for acrylic plates.

- Built-in stops prevent the screws from coming apart once maximum expansion has been obtained
- Small dimensions with maximum expansion
- Solder free
- Break resistant retention legs, stable guidance throughout complete expansion
- The integrated spindle friction prevents unwanted turning back
- Permanently laser marked arrow on the body of the screw indicates the opening direction and maximum expansion
- Screw can be tied down once desired expansion has been reached

Screw: 9.4 mm

Maximum expansion: 7 mm

4 x 1/4 turn = 0.80 mm



602-820-11	1 piece
-------------------	---------

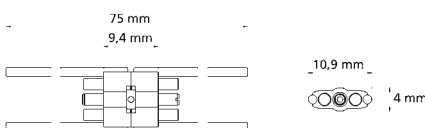
CE 0483

With Safety Key

602-820-01	1 piece
602-820-51	10 pieces

CE 0483

Without Safety Key



Palex® Mini - 12

Special Expansion Screw with straight retention legs

New improved quality

For mid-palatal suture separations by means of fixed appliances without the need for acrylic plates.

- Built-in stops prevent the screws from coming apart once maximum expansion has been obtained
- Small dimensions with maximum expansion
- Solder free
- Break resistant retention legs, stable guidance throughout complete expansion
- The integrated spindle friction prevents unwanted turning back
- Permanently laser marked arrow on the body of the screw indicates the opening direction and maximum expansion
- Screw can be tied down once desired expansion has been reached

Screw: 9.4 mm

Maximum expansion: 12 mm

4 x 1/4 turn = 0.80 mm

Palex® Mini - 12

Special Expansion Screw with bent retention legs

New improved quality

For mid-palatal suture separations by means of fixed appliances without the need for acrylic plates.

- Built-in stops prevent the screws from coming apart once maximum expansion has been obtained
- Small dimensions with maximum expansion
- Solder free
- Break resistant retention legs, stable guidance throughout complete expansion
- The integrated spindle friction prevents unwanted turning back
- Permanently laser marked arrow on the body of the screw indicates the opening direction and maximum expansion
- Screw can be tied down once desired expansion has been reached

Screw: 9.4 mm

Maximum expansion: 12 mm

4 x 1/4 turn = 0.80 mm

602-821-11	1 piece
-------------------	---------

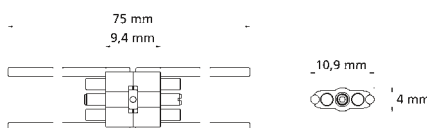
CE 0483

With Safety Key

602-821-01	1 piece
602-821-51	10 pieces

CE 0483

Without Safety Key



Palex® Medium - 10

Special Expansion Screw with straight retention legs

New improved quality

For mid-palatal suture separations by means of fixed appliances without the need for acrylic plates.

- Built-in stops prevent the screws from coming apart once maximum expansion has been obtained
- Small dimensions with maximum expansion
- Solder free
- Break resistant retention legs, stable guidance throughout complete expansion
- The integrated spindle friction prevents unwanted turning back
- Permanently laser marked arrow on the body of the screw indicates the opening direction and maximum expansion
- Screw can be tied down once desired expansion has been reached

Screw: 12.4 mm

Maximum expansion: 10 mm

4 x 1/4 turn = 0.80 mm

602-818-11	1 piece
-------------------	---------

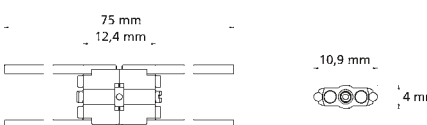
CE 0483

With Safety Key

602-818-01	1 piece
602-818-51	10 pieces

CE 0483

Without Safety Key



Special Screws



602-822-11	1 piece
-------------------	---------

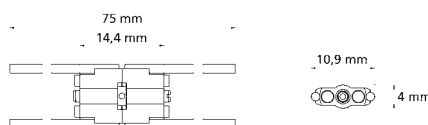
CE 0483

With Safety Key

602-822-01	1 piece
602-822-51	10 pieces

CE 0483

Without Safety Key



Palex® Maxi - 12

Special Expansion Screw with straight retention legs

New improved quality

For mid-palatal suture separations by means of fixed appliances without the need for acrylic plates.

- Built-in stops prevent the screws from coming apart once maximum expansion has been obtained
- Small dimensions with maximum expansion
- Solder free
- Break resistant retention legs, stable guidance throughout complete expansion
- The integrated spindle friction prevents unwanted turning back
- Permanently laser marked arrow on the body of the screw indicates the opening direction and maximum expansion
- Screw can be tied down once desired expansion has been reached

Screw: 14.4 mm

Maximum expansion: 12 mm

4 x 1/4 turn = 0.80 mm



602-823-11	1 piece
-------------------	---------

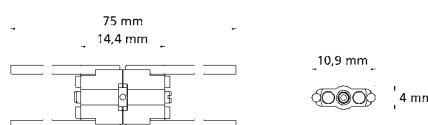
CE 0483

With Safety Key

602-823-01	1 piece
602-823-51	10 pieces

CE 0483

Without Safety Key



Palex® Maxi - 12

Special Expansion Screw with bent retention legs

New improved quality

For mid-palatal suture separations by means of fixed appliances without the need for acrylic plates.

- Built-in stops prevent the screws from coming apart once maximum expansion has been obtained
- Small dimensions with maximum expansion
- Solder free
- Break resistant retention legs, stable guidance throughout complete expansion
- The integrated spindle friction prevents unwanted turning back
- Permanently laser marked arrow on the body of the screw indicates the opening direction and maximum expansion
- Screw can be tied down once desired expansion has been reached

With Safety Key

Screw: 14.4 mm

Maximum expansion: 12 mm

4 x 1/4 turn = 0.80 mm

Piston Spring Screws, Assortment

Complete assortment of piston spring screws and accessories.

Piston spring screws for the movement of individual teeth. These screws exert a constant, elastic and easily controllable pressure on the tooth to be moved. The compact size allows them to be easily built into appliances.

Treatment is started with the 4 mm screw, which is exchanged for the 6 mm screw and finally the 8 mm screw as the tooth in question is moved.

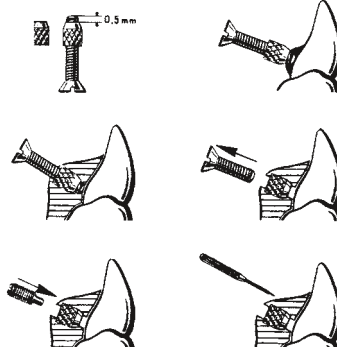
Contents:

- 10 x Piston spring screws, length 4 mm
REF 609-004-00
- 10 x Piston spring screws, length 6 mm
REF 609-006-00
- 10 x Piston spring screws, length 8 mm
REF 609-008-00
- 10 x Positioning screws
REF 609-100-00
- 10 x Serrated housing nuts
REF 609-200-30
- 1 x Reamer REF 609-300-00
- 1 x Screw driver REF 609-400-00
- 1 x Instructions

4 x 1/4 turn = 0.35 mm

609-500-00	1 Assortment
------------	--------------

CE



Piston Spring Screws

For the movement of individual teeth. These screws exert a constant, elastic and easily controllable pressure on the tooth to be moved. Their compact size allows them to be easily built into appliances.

4 x 1/4 turn = 0.35 mm

Length: 4 mm

4 x 1/4 turn = 0.35 mm

Length: 6 mm

4 x 1/4 turn = 0.35 mm

Length: 8 mm

609-004-00	10 pieces
------------	-----------

CE



609-006-00	10 pieces
------------	-----------

CE



609-008-00	10 pieces
------------	-----------

CE



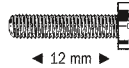
Expansion Screws

Accessories



609-100-00

10 pieces



Positioning Screw

For piston spring screws.

To position the piston spring screw into the acrylic.

Length: 12 mm



609-200-30

10 pieces



Serrated Housing Nut

For piston spring screws.

To position into acrylic or to weld onto wire elements.

Length: 3 mm



609-300-00

1 piece

Reamer

For piston spring screws.



609-400-00

1 piece

Screw Driver

For piston spring screws.

To activate the piston spring screw.



611-130-00

50 pieces



Arrows to Indicate the Opening Direction

For Expansion Screws.

Color: yellow



611-131-00

50 pieces



Color: white



611-132-00

50 pieces



Color: pearl-blue

Universal Bending Key

Easy bending of the retention legs of all Palex®, Variety and Titanium Palex® screws without the use of any additional pliers (leverage principle).

611-122-00	1 piece
------------	---------



Safety Key

Can be used with all Dentaurem Palex® and Variety screws. For safe activation of the expansion screws by the patient in Palex® and Variety fixed appliances.

611-120-01	10 pieces
------------	-----------

CE



Palex® SpotLite Key

For stress-free activation

A focused beam of light allows the user/patient to easily guide the pin into the activation hole.

400-004-00	1 piece
------------	---------



Expansion Screw Key

Straight, small, standard

Can be used with all Dentaurem expansion screws. Stainless steel-rustfree. To activate all expansion screws in removable appliances. Outside of the mouth.

611-115-00	1 piece
611-115-30	10 pieces
611-115-60	100 pieces

CE



Expansion Screw Key

Large, with elongated handle

Can be used with all Dentaurem expansion screws. Stainless steel-rustfree. To activate all expansion screws in removable appliances. Outside of the mouth.

611-116-00	1 piece
------------	---------

CE



Wedge Ruler

Can be sterilized

For checking the opening of appliances.

043-720-00	1 piece
------------	---------



Accessories



612-000-00	1 Set
------------	-------

CE

Expansion Screw Sample Kit

Filled with 29 expansion screws that are currently available, plus 3 expansion screw keys.

1 Set = 32 pieces



163-602-01	10 pieces
------------	-----------

Appliance Container, Mini

The mini version is especially suitable for single appliances and oral screens, such as the Ulmer Model.

Made of durable plastic.

Color: pearl-blue



163-603-01	10 pieces
------------	-----------

Color: neon-pink



163-604-01	10 pieces
------------	-----------

Color: neon-yellow



163-605-01	10 pieces
------------	-----------

Color: neon-orange



163-606-01	10 pieces
------------	-----------

Color: neon-green

Appliance Container, Maxi

The maxi version is especially suitable for bimaxillary appliances, such as activator, bionator.

Made of durable plastic.

Color: pearl-blue

163-702-01

10 pieces



Color: neon-pink

163-703-01

10 pieces



Color: neon-yellow

163-704-01

10 pieces



Color: neon-orange

163-705-01

10 pieces



Color: neon-green

163-706-01

10 pieces



Color: black

163-707-01

10 pieces



Color: white-flecked

163-708-01

10 pieces



Accessories



163-802-01

10 pieces

Appliance Container, Magnum

The magnum version is especially suitable for extremely large Fraenkel appliances, orthodontic appliances for adult treatment, or dentures.

Made of durable plastic.

Color: pearl-blue



163-806-01

10 pieces

Appliance Container „Stardust“

Made of durable plastic.

Universal size for removable upper appliances, bimaxillary appliances and function regulators.

Color: blue (with silver-colored Dentaurem-Logo)



163-805-01

10 pieces

Appliance Container „Soccer Ball“

Made of durable plastic.

Universal size for removable upper appliances, bimaxillary appliances and function regulators.

Color: black-white



163-807-00

25 pieces

Lanyard with Safety Clips

For appliance containers.

Colors: blue, neon rose, neon yellow, neon orange, neon green, printed with "Dentaurem", mixed

311