

DREAMS NEVER FADE



Digital Dental Image
Plate Scanner





About US

COMPANY INTRODUCE

Hefei DentaFilm Medical Equipment Co., Ltd focus on dental imaging technologies and development of imaging equipment and digital platform. Our R&D team have experienced talents from the industry. 65% of the R&D team have a master or doctor degree. With over 100 Million RMB venture capital funding, DentaFilm is dedicated to be a leading supplier of FICP from China.

The headquarter is located in Hefei, Anhui province, China. Over 180,000 square meter of reserved space and 5000 square meter of building area. We have started R&D center in Shenzhen and Chengdu, global operation center in Singapore. Until now, we have developed CBCT, surgical microscope, CR, 3D intro oral scanner, 3D printing machine, periodontal probe and dental data management platform. We are the first to build a digital dentistry development and manufacturing base. In order to promote digital dentistry, we have invested a lot to build a full function training center to provide all around service, customized training program to our customer.

Our Mission

Secure your smile with digital imaging technologies

Core Value

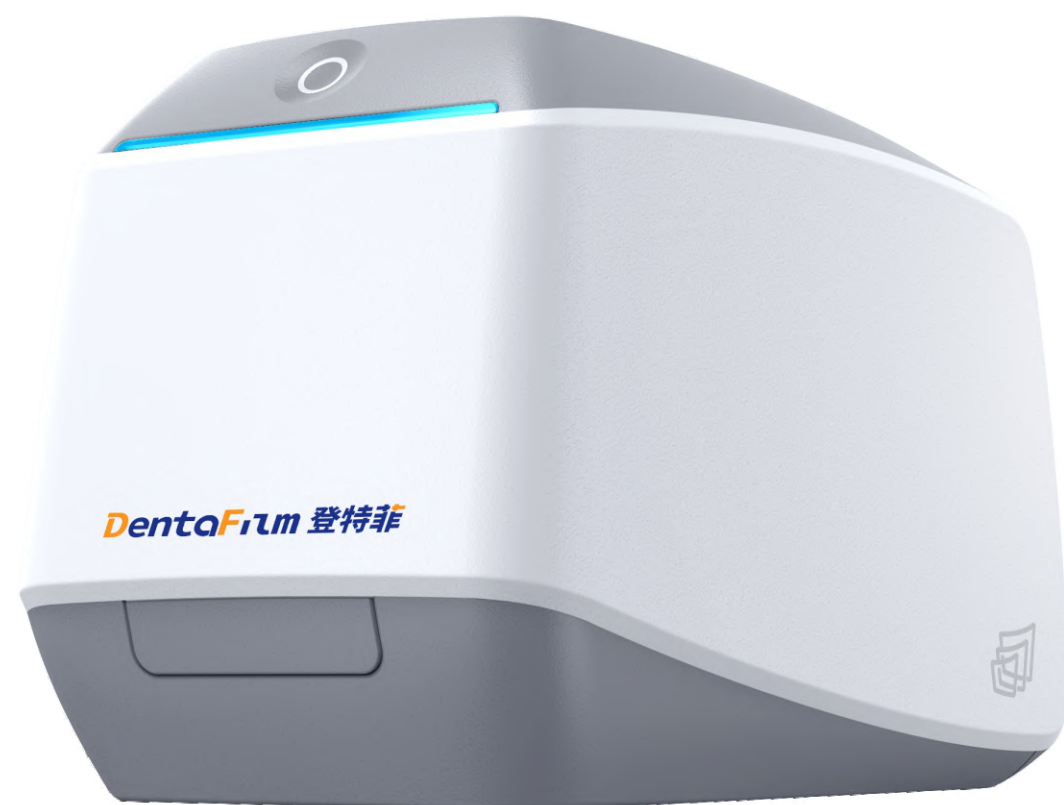
Be rigorous and innovative
Serve our customer
Upbringing all employee

Our Vision

To be a globally known supplier of digital imaging solution in dentistry

SMART

Digital Dental Image Plate Scanner



Innovative Technology of
Image Integration

SP-dot Matrix U-ACE

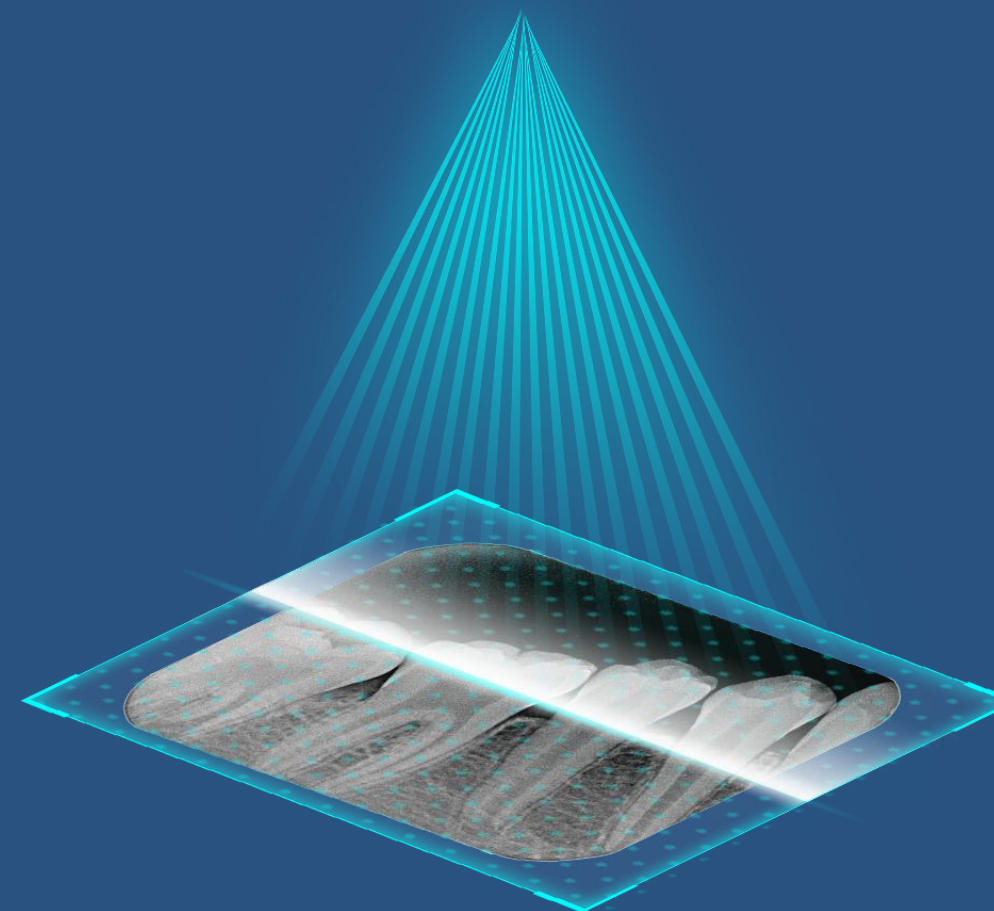
Initiate smart interaction
Free communication

Innovative Technology of Image Integration

> > >

SP-dot Matrix Super Pulse Laser Lattice Scanning

SP-dot Matrix image processing technology is used to improve efficiency of image generation. Image with high grayscale value can be generated within seconds.



U-ACE Imaging Technology

After optimizing ACE algorithm, we get the U-ACE version. Combining with SP-dot Matrix technology, we are able to get exquisite and clear images.



Smart Interaction. Free Communication.



Dentalking system, customized communication during treatment.

- Initiate unique communication solution of dental treatment for our customer.
- By showing scanned image and proposed treatment, patient can have a better understanding of the treatment, and more confidence in dentist.
- The interface of showing scanned image and proposed treatment is customizable. Dentist can choose as he like in order to have better communication with patient.



Dose data analysis and control system

- The system can read the dose data and display it on FeeLin system.



Smart interaction, easy work

- The status of the scanner, standby, reading, finish, is showed by different color of light. A smart and direct way to know what the scanner is doing.



Standby



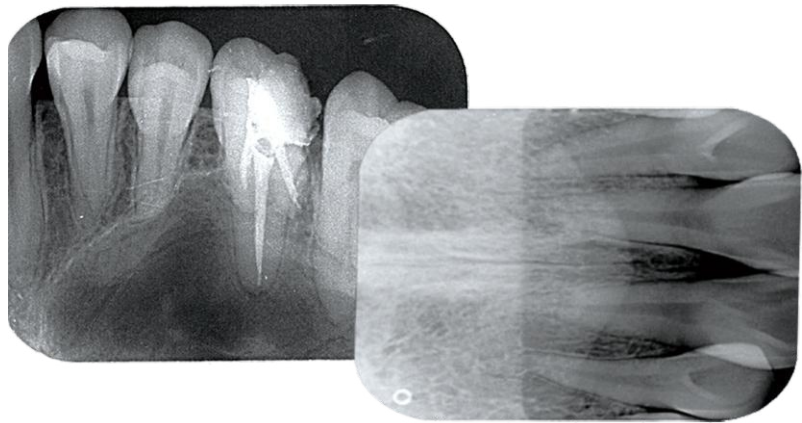
Reading



Finish

Ultimate image, every small lesion can be easily seen.

- Thanks to high resolution and high grayscale value image, every small lesion can be shown in detail.
- The digital image has 16bit grey scale and 14lp/mm resolution. With the help of image processing algorithm, the final image is clear and readable. No further adjustment needed.



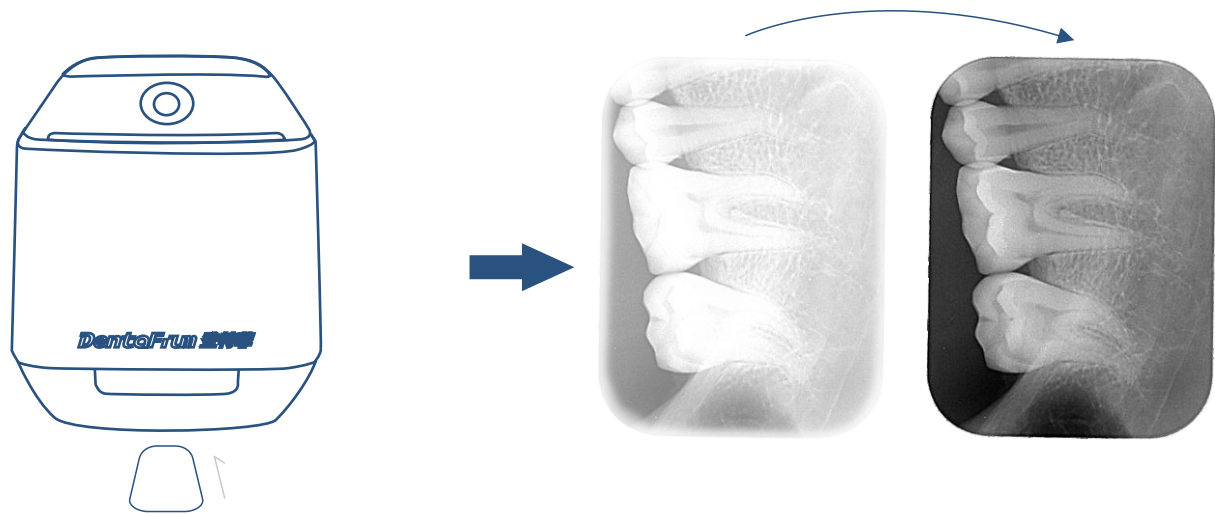
As thin as 0.1mm, guaranteed comfort for patient when scanning.

- Thin and soft plate can fit patient’s teeth better. The image is clearer and has less distortion.。
- The phosphorescent plate can be used for more than 1000 times. A storage box is available to protect the phosphorescent plate well.
- The phosphorescent plate has 4 sizes, 0# (22x31mm), 1# (24x40mm), 2# (31x41mm), 3# (27x54mm). They can be used to all patients.



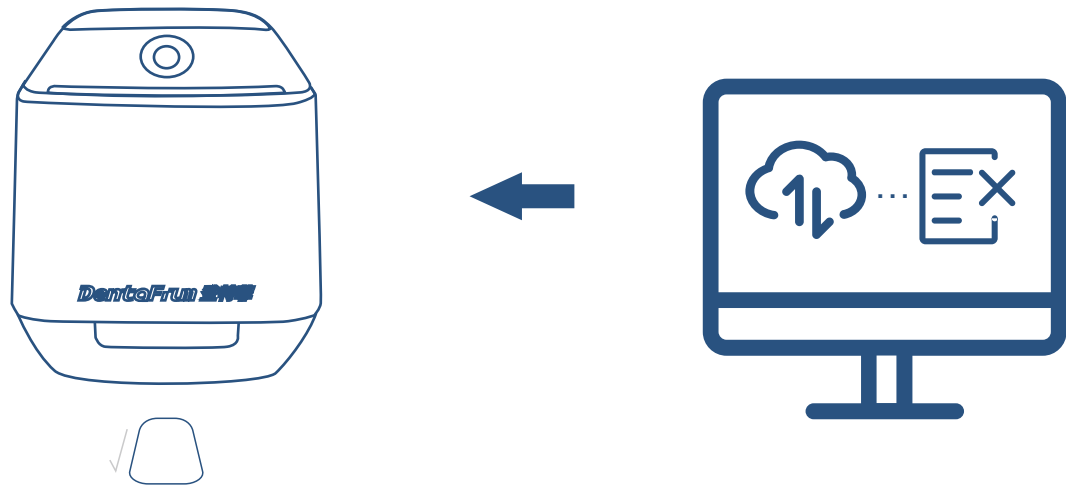
Smart Phosphorescent Plate Processing System

- Smart scan: automatically start scanning and reading after the plate is pushed in. When finished, the plate is pulled out.
- Image optimization: automatically adjust the size and position of window to get best image display.
- Smart erase: when finished reading, the system will automatically erase the image on plate. Convenient to use again.
- Saving power: in standby mode, the scanner will switch to power saving mode.



Scan right after plate is pushed in

Automatically adjust window when scanning



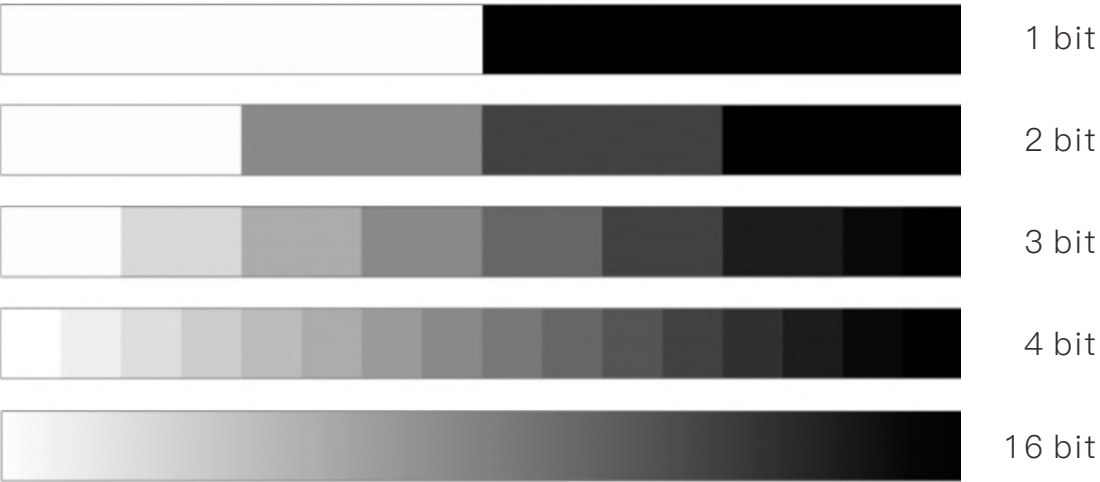
Erase what’s on the plate after reading is complete

Automatically pull out the plate. Standby with low power consumption

Super Clear Dental Image



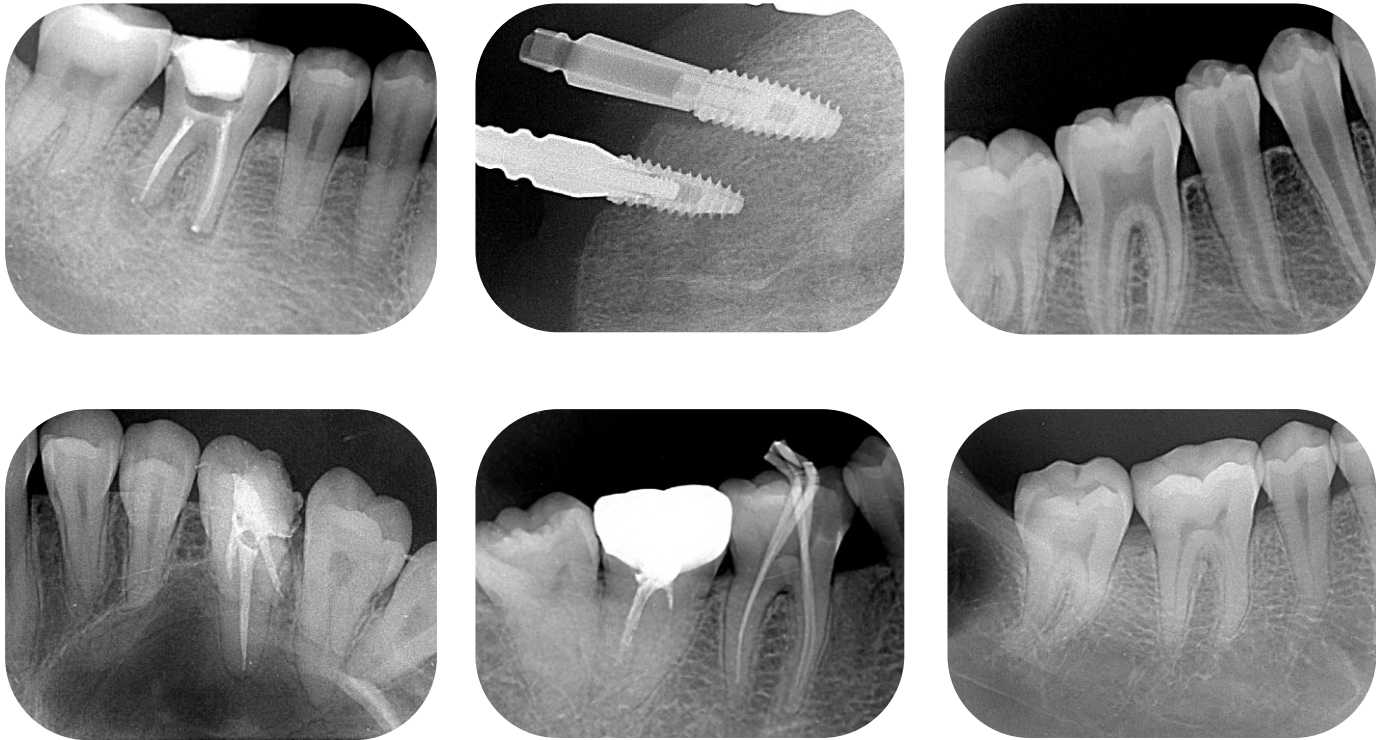
Greyscale indicates the lightness level of image. It is the value of black and white or lightness at each pixel. From black to white, there are many grayscale values. The more the grayscale values, the more vivid and clear the image.



Display on Multiple Devices



Image Samples



Relative Advantages



Compared to digital sensor	Compared to traditional film
Imaging plate is thin and soft. Each to be placed	No need for dark room. More convenient
100% effective imaging area. More details in image	No harmful chemicals. Safe and eco-friendly
Different plate sizes for all needs	Exposure of image adjustable on software
No cables, better fit in patient's mouth	Digital image, instant use
Running cost is lower. Economic	Digital diagnosis and storage

FEELIN SYSTEM

Technical Parameters

Plate size supported	0#, 1#, 2#, 3#
Resolution	14lp/mm
Pixel size	35um
Greyscale value	16bit
Imaging plate erase	auto
Communication interface	USB
Power supply	AC 220V 50Hz (changeable)
Dimensions	296mmX170mmX196mm
Operating system	Microsoft Windows 7 or above
Data printing	office printer or DICOM printer
Image output format	DICOM, BMP and JPG



A software designed for digital dentistry.
A perfect partner for dental offices

FeeLin System

A cross-era dental integration software

----Meet all the needs of dental clinics. Connect equipment, dentist

AI and DentaCloud

FeeLin software has integrated AI in application. It saves dentist a lot of time. All data in FeeLin can be uploaded to DentaCloud. Data is more secure than ever. And more reachable

Complete digital integration solution

DentaFilm provide a complete solution for digital dentistry. All DentaFilm equipment can be connected to FeeLin system. By integrating valuable data of all devices, optimizing workflow, enriching data applications and linking all interfaces, FeeLin system help improve the efficiency of dental office. Dentist can focus all the energy on providing treatment



One Clinic, One Software

DentaFilm can supply all imaging equipment needed in a dental clinic, including clinic management module, imaging module, imaging data application, data processing and smart software solution. FeeLin system is the one step to digital dentistry

Smart and innovative design of equipment

All DentaFilm equipments are design with IOT capability. You can monitor the status of all equipment in FeeLin system. The maintenance and service can be done in time

Value of Data

The valuable data produce by equipment is connected to FeeLin. In the future, we can connect supplier, such as denture processing, consumables supply and so on. We can provide IOT solution to third party equipment as well