

MiNi™

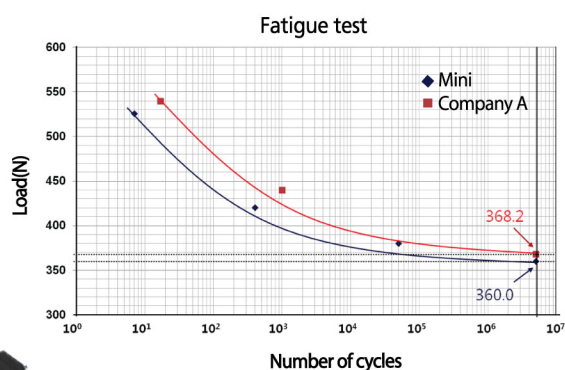
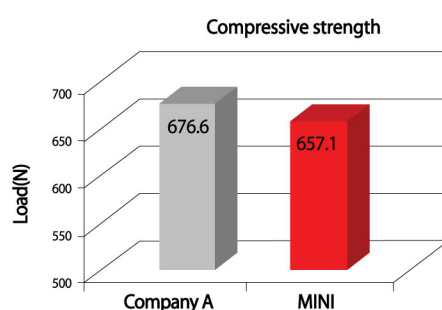
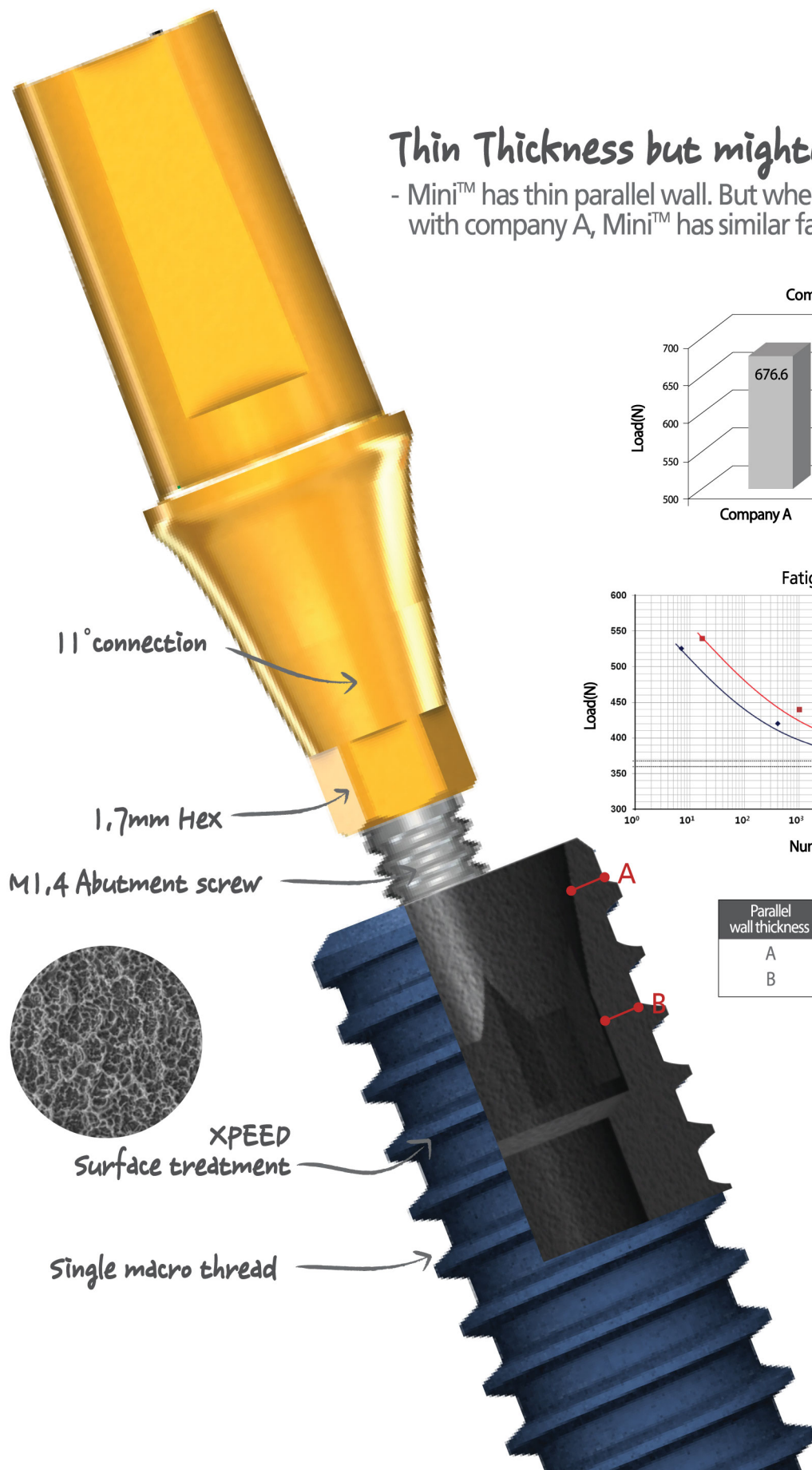
The strongest for narrow ridge



I Features

Thin Thickness but mighty!!

- Mini™ has thin parallel wall. But when compared with company A, Mini™ has similar fatigue strenght.



Parallel wall thickness	Company A Φ3 (OD Φ3)	Mini Φ3 (OD Φ3)
A	0.3580	0.2910
B	0.4390	0.3130

I Fixture & Drilling

> Fixture line up



Ø3.0mm diameter fixtures

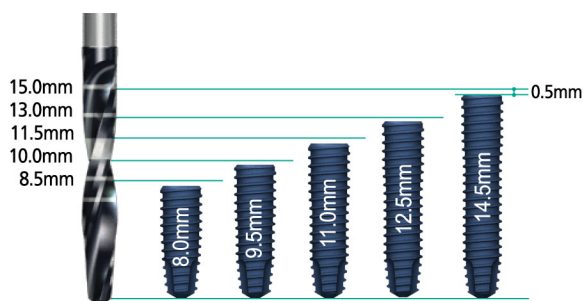
Diameter	Length(mm)	Ref. C
Ø3.0	8.5	MIIF3008
	10.0	MIIF3010
	11.5	MIIF3011
	13.0	MIIF3013
	15.0	MIIF3015



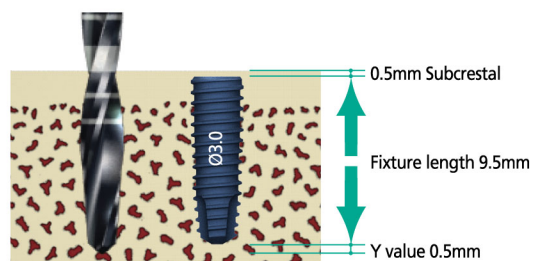
Ø3.25mm diameter fixtures

Diameter	Length(mm)	Ref. C
Ø3.25	8.5	MIIF3308
	10.0	MIIF3310
	11.5	MIIF3311
	13.0	MIIF3313
	15.0	MIIF3315

> Fixture length vs Drill marking



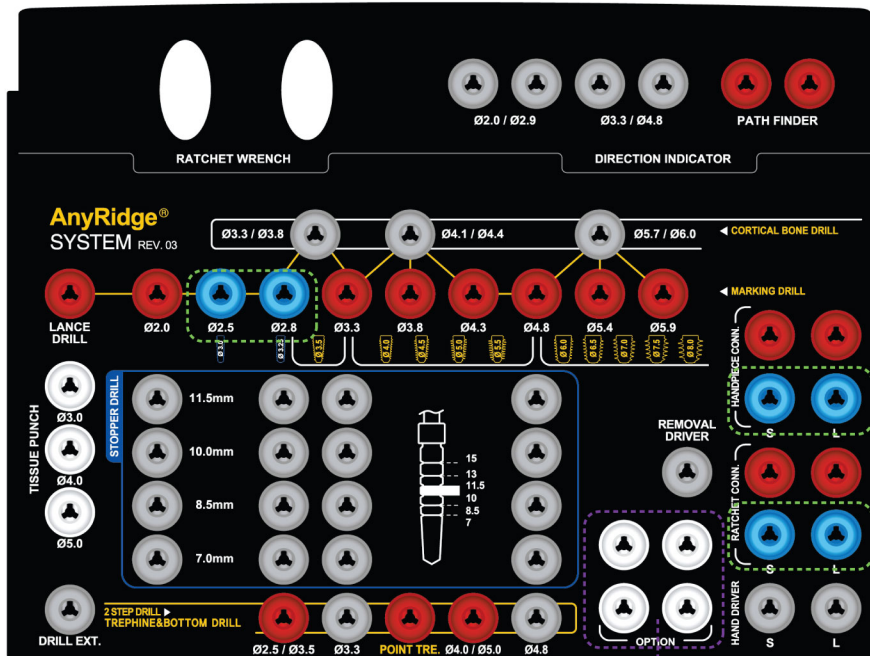
The actual lengths of Mini™ internal fixture are 0.5mm shorter than the depth markings of a shaping drill.
Therefore, the fixture will be placed 0.5mm under the crest automatically.



Actual Drilling Depth 10.5mm
= 0.5mm Subcrestal + 9.5mm actual fixture length + 0.5mm Y value

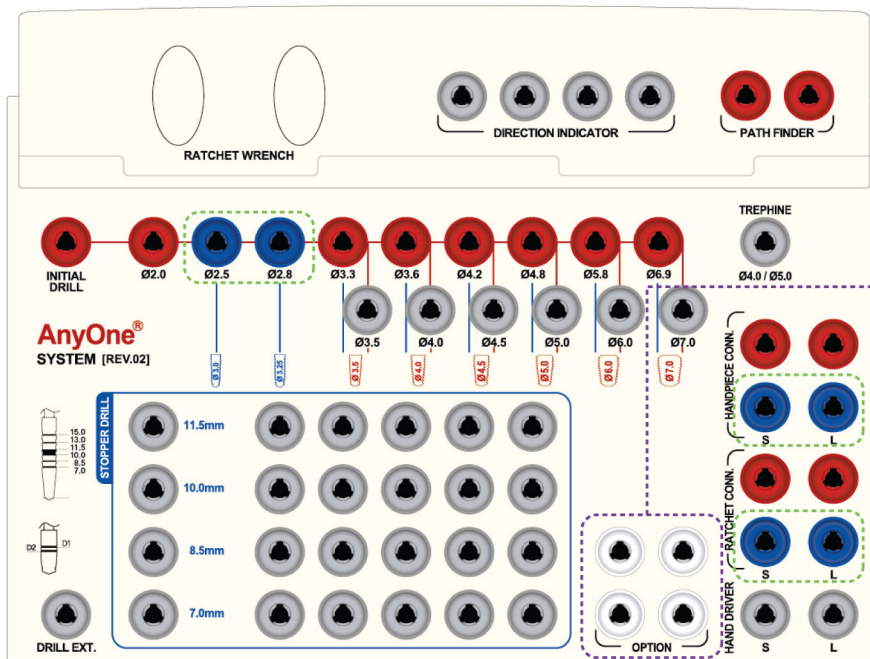
I Surgical Kit

- Both AnyRidge® and AnyOne® Surgical Kits have drills and instruments for Mini™ Internal System from REV.03 and REV.02 respectively.



Instruments for the Mini Internal System (Marked with blue silicone holder)

Otherwise, option spaces can be used to set-up instruments for the Mini Internal System. (Ask to your sales representative to provide new drills & instruments for Mini™)



Option space for Mini™

1. Ø2.5 Shaping Drill
2. Ø2.8 Shaping Drill
3. Handpiece Connector(Long)
4. Ratchet Extension(Long)

I Handpiece Connector & Ratchet Connector

> Handpiece Connector

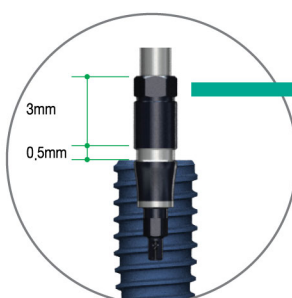


Profile Diameter	Type	Ref. C
Ø3.8	Short	HCS17
	Long	HCL17

> Ratchet Connector



Profile Diameter	Type	Ref. C
Ø3.8	Short	RCS17
	Long	RCL17



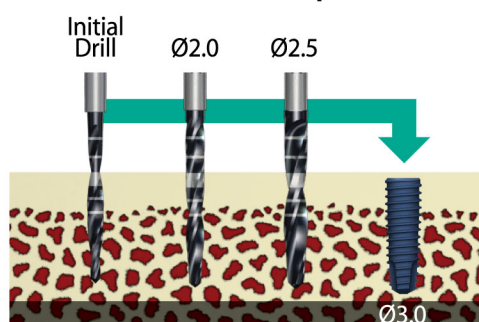
This hex matches with the internal hex of a fixture. Need to recognize for immediate temporization with a Fuse abutment and when an angulated abutment is necessary.

> Shaping Drill & Drilling Sequence

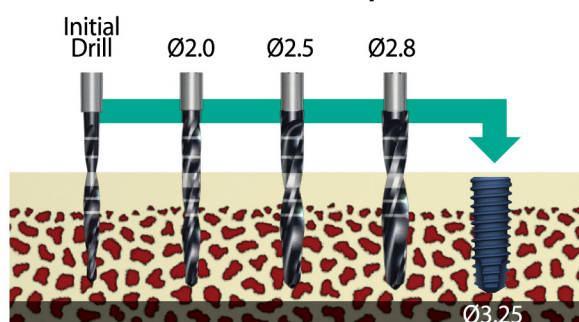


Drilling Diameter	Drill Length	Shank Length	Ref. C
Ø2.5	18	15 (short)	SD2518S
Ø2.8			SD2818S

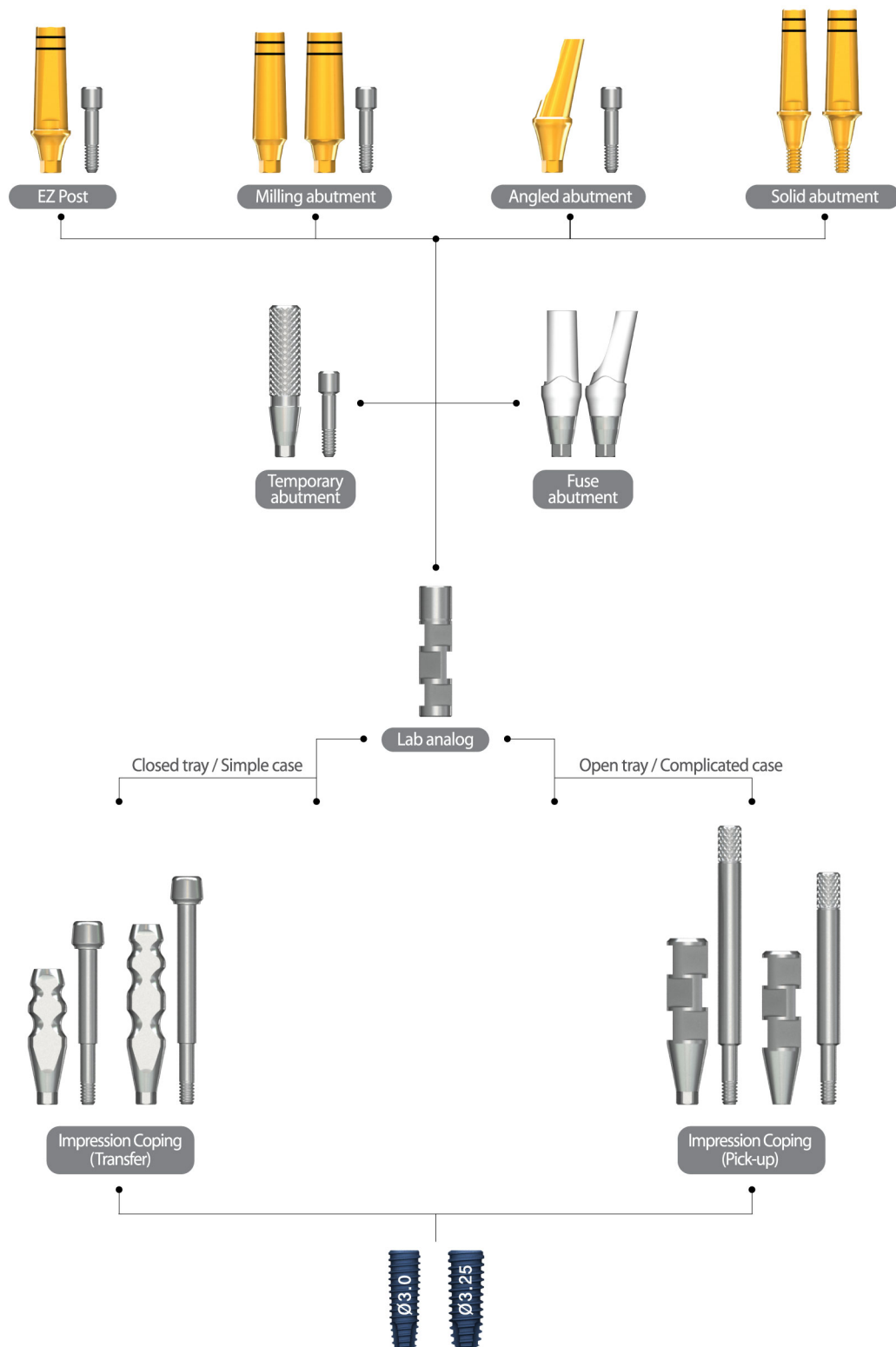
> For Ø3 Mini™ implant



> For Ø3.25 Mini™ implant



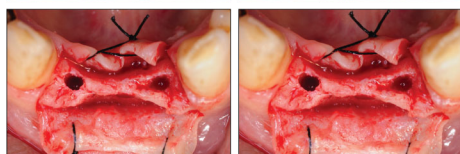
I Prosthesis



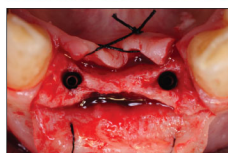
I Case report



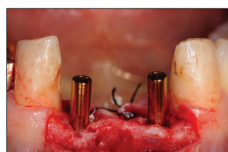
1 Preoperative panoramic radiograph and intraoral photos. The ridge was atrophied due to long-term absence of teeth.



2 Flap was elevated and two osteotomy sockets were made for 3.0mm Mini fixtures. There was enough bone left labio-lingually even at this thin ridge.



3 Two 3.0 x 15.0 mm Mini implants were placed with excellent stability. There was no bone defect also.



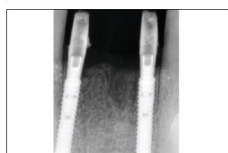
4 Two piece EZ posts were connected to make temporary prosthetics for immediate provisionalization.



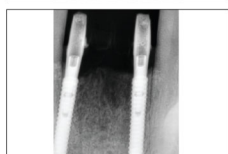
5 Flap was sutured and EZ posts were prepared a little bit for the path.



6 Provisional restoration was made at the chair side. Due to the smaller diameter of fixture and abutment, the prosthetics could have a nice emergence profile.



7 Clinical photo and intraoral radiograph immediately after surgery.



8 Clinical photo and intraoral radiograph 1 month after surgery.



9 Clinical photo and intraoral radiograph after final restoration.

