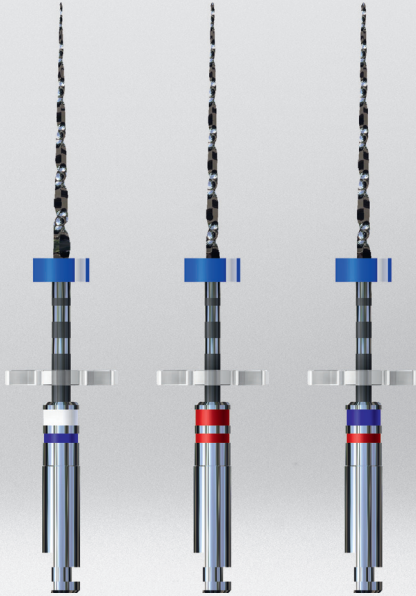




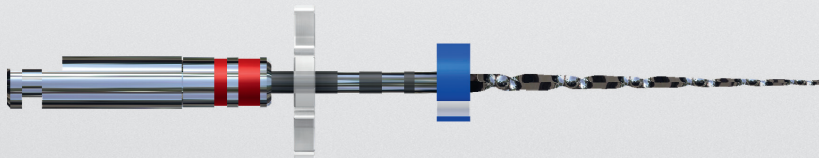
FKG  
swiss endo



**iRace**

Quick, effective and safe

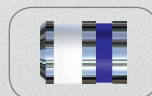
## ► Exclusive



### New shank

Easy identification of instruments

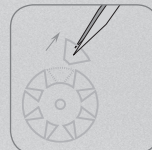
- Size - large ring, ISO colour code
- Taper - thin ring: yellow .02, red .04, blue .06)



### SafetyMemoDisc (SMD)

To master fatigue and number of uses

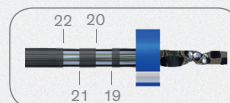
- After each use remove 1 petal for **S**imple cases, 2 petals for **M**edium cases, 3 petals for **D**ifficult cases
- Discard the instrument when all petals have been removed



### Depth marks

On instruments of length 21/25/31 mm

- **Allow determination of the position** of the instrument on X-ray and to control the working length



### Silicone Endo stop

To mark working length, radio opaque

- The stroke identifies the original tip direction in the root canal (stainless steel instruments)
- **ISO Colours** - to indicate length: red 21mm, blue 25 mm, black 31 mm





## Electrochemical polishing

Enhanced resistance against fatigue and corrosion

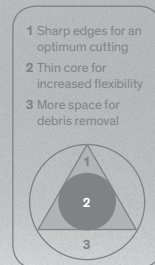
- ▶ The treatment **eliminates surface imperfections**, reducing drastically the risk of weak points (micro-cracks)
- ▶ The resulting shiny surface **allows better cleaning and disinfection**, improving the sterilization process



## Optimal cutting efficiency

Triangular cross-section with sharp edges

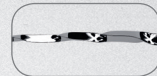
- ▶ **Cuts better and faster**, without any pressure (1).
- ▶ The smaller core grants a **higher flexibility** (2) and allows a better progression in curved canals
- ▶ **More space for debris removal** (3), improving their evacuation without jamming the blade



## Elimination of screwing-in effect

Alternating cutting edges

- ▶ The exclusive **patented blade design** avoids screwing-in effect and allows a **better control** of instrument's progression



## Exclusive rounded safety tip

Perfect centering the of instrument in the canal

- ▶ Bypasses irregularities and **steers clear of lateral canals**
- ▶ **Less risk of perforation** nor ledge



## ► Protocols

### Golden rules

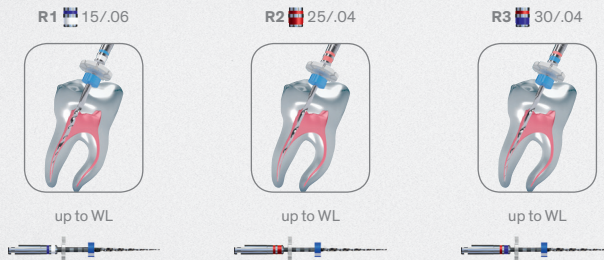
Speed : 600 rpm  
Torque : 1.5 Ncm

- Long back-and-forth strokes
- Light touch, let the instrument work
- Work 3-4 seconds in a row, get out
- Clean the blade and irrigate the canal

### iRace: 3 instruments

For most cases (straight, slightly curved and/or large canals)

1. Introduce R1 in rotation and reach working length (WL);  
In case R1 does not reach the WL, do not force and go to step 1 of iRace Plus protocol
2. Continue shaping with R2 up to WL;
3. Finish the shaping with R3 up to WL.



For bigger apical size preparation, please connect to [www.fkg.ch](http://www.fkg.ch) to find the full range of FKG instruments.

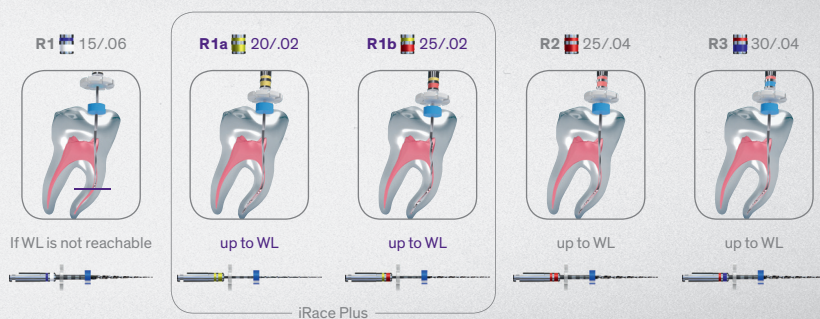


## iRace Plus: 2 instruments

For difficult cases (severely curved, narrow and/or calcified canals)

Following of iRace protocol step 1

1. Use R1a to reach WL;
  2. Continue shaping with R1b to WL;
- When WL is reached, continue from step 2 of iRace protocol.



## ► Clinical cases

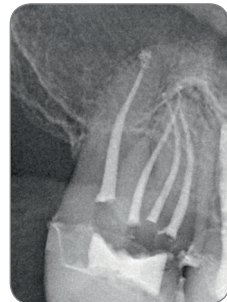
### Case 1

Endo treatment of tooth 47 with the iRace sequence: R1, R2 and R3. Curvatures have been fully preserved.



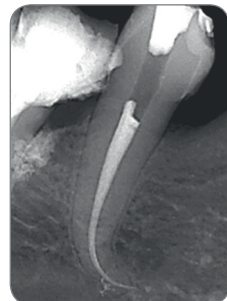
### Case 2

Endo treatment of tooth 16 with 4 distinct canals. Palatine canal was shaped with the iRace sequence. The vestibular canals were shaped with the help of iRace Plus: R1, R1a, R1b, R2 and R3.



### Case 3

Endo treatment of tooth 34 which has a severe apical curvature. The canal was shaped with iRace Plus: R1, R1a, R1b, R2 and R3. The natural curvature was preserved.



Courtesy of Dr. Bertrand Khayat (France)





## FKG Dentaire SA

Founded in 1931, FKG Dentaire SA is today at the very cutting edge of development, production and distribution of dental products for dentists, endodontists and laboratories. Precision has always been central to FKG, and the company naturally made its base in «Watch Valley,» home to most Swiss watchmaking and microtechnical companies.

FKG was given a new lease of life in 1994, when Jean-Claude Rouiller took up the reins. A CEO with a vision, he set out a strategy based on innovative products and the concept of machinery specially manufactured for the dental industry. Mr Rouiller also enlarged the distribution network to encompass more than 80 countries worldwide. FKG products are certified according to international norms and standards.

The Swiss Venture Club named FKG «Western Switzerland Company of the Year 2012», a reward for the company's dynamism, high product quality, and its continuing innovation.

**«Western  
Switzerland  
Company of  
the Year 2012»**



**FKG Dentaire SA**  
Crêt-du-Loche 4  
CH-2304 La Chaux-de-Fonds  
Switzerland  
T +41 32 924 22 44  
F +41 32 924 22 55

[info@fkg.ch](mailto:info@fkg.ch)  
[www.fkg.ch](http://www.fkg.ch)

